

# ANNUAL REPORT 2024

## Center for Clinical Epidemiology and Research Unit of Clinical Epidemiology

OUH Odense University Hospital, Svendborg Hospital  
Kløvervænget 30, entrance 216, ground floor east  
DK-5000 Odense C

Contact: Telephone: +45 2115 3599

E-mail: [bente.noergaard@rsyd.dk](mailto:bente.noergaard@rsyd.dk)



Center for  
Clinical Epidemiology

OUH  
Odense  
University Hospital

Region of  
Southern Denmark

UNIVERSITY OF SOUTHERN DENMARK

## Contents

WELCOME.....	3
SOCIAL MEDIA.....	4
ORGANIZATION.....	5
CONSULTANCY TASKS AND RELATIONS.....	6
RESEARCH ACTIVITIES.....	7
PHD-STUDENTS.....	10
ACADEMIC ASSESSMENT.....	11
TEACHING.....	12
FUNDINGS.....	13
PUBLICATIONS.....	14

# WELCOME

We welcome everybody with an interest in clinical epidemiology and data analysis. We encourage anyone with a project, advisory task, or research project, in need of assistance with clinical epidemiology or data analyses, to contact us.

We contribute to evidence-based medicine on the prognosis of patients. The vision of the Center for Clinical Epidemiology is to be known and respected for projects and research within clinical epidemiology at an international level, and to provide expert knowledge within a wide range of diseases and clinical epidemiological methods to solve issues related to patient prognosis. We want our staff at Center for Clinical Epidemiology to be desirable collaborators in local, regional, national, and international projects and research activities.

Our mission is to ensure that all clinical decisions in patient treatment are evidence-based. Therefore, we focus on research that can be applied to and implemented in daily clinical practice.

At the Center for Clinical Epidemiology, we concentrate on the following activities:

1. Projects and consultancy services within clinical epidemiology and data analysis
2. Clinical epidemiological research
3. Special projects related to clinical epidemiology in public sector services
4. Academic work affiliated with the Department of Clinical Research, University of Southern Denmark

In 2024 we published 49 peer-reviewed articles in international medical journals, and we have brought external fundraising into a continuous focus of interest.

*Bente M Nørgård*

Bente Mertz Nørgård  
Professor and head of the Center for Clinical Epidemiology and the Research Unit of Clinical Epidemiology

# SOCIAL MEDIA

Below you will find our websites and social media account:

Web Danish: <http://www.ouh.dk/wm220632>

Web English: <https://en.ouh.dk/research/clinical-epidemiology/>

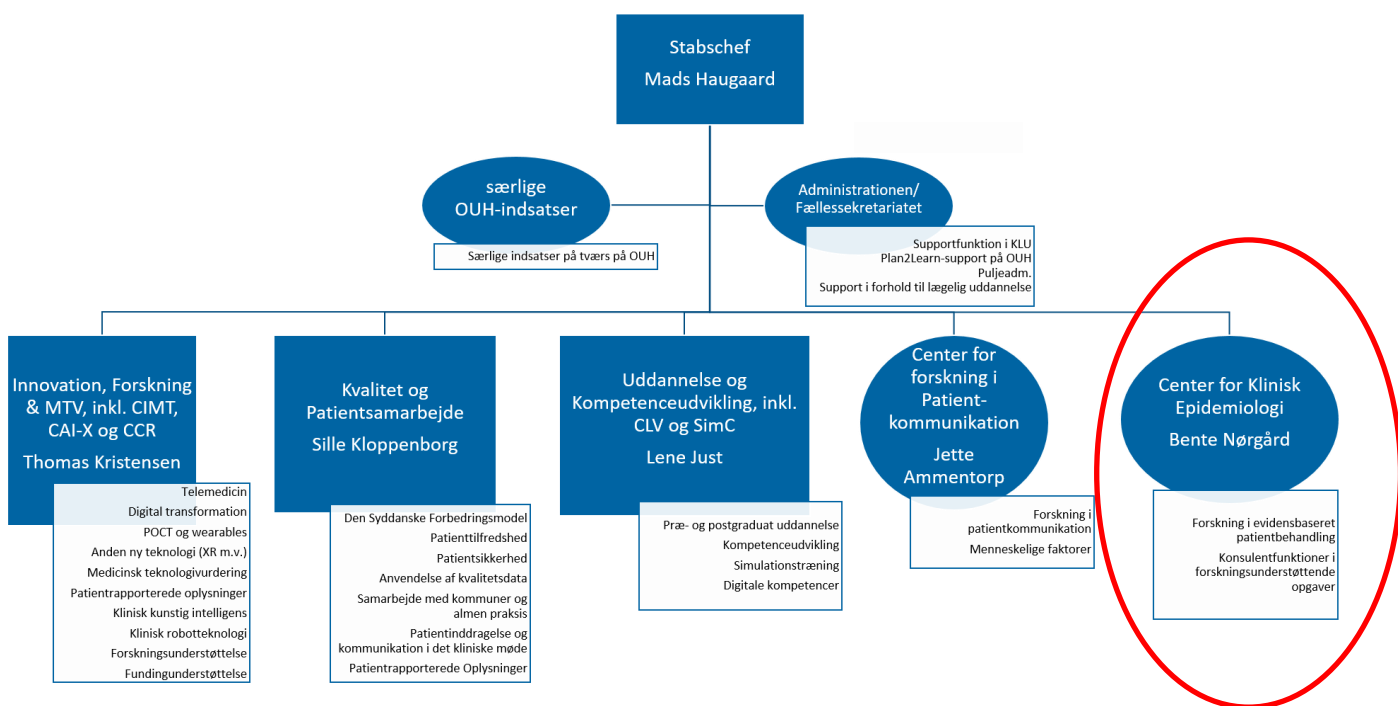
University of Southern Denmark website: <https://www.sdu.dk/da/forskning/klinisk-epidemiologi>

LinkedIn Profile:

**LinkedIn**  **@Center for Klinisk Epidemiologi, OUH**

# ORGANIZATION

The Center for Clinical Epidemiology is an independent unit embedded in the Department of Clinical Development at Odense University Hospital. All research activities from the research unit refer to the Department of Clinical Research at the University of Southern Denmark. The organization diagram (in Danish) is shown below.



An overview of the staff at the Center for Clinical Epidemiology is available at our website: [Medarbejdere hos CKE \(ouh.dk\)](https://www.ouh.dk/medarbejdere hos CKE)

# CONSULTANCY TASKS AND RELATIONS

Activities within the following special projects and consultancy tasks in particular have occupied the center's resources in 2024 (the following is not a complete list of consultancy functions):

The cooperation with Emergency Medicine, Odense University Hospital, concerning the daily operation of "The emergency cohort of Southern Denmark" has been ongoing for several years. The database comprises data on all patients admitted via the Emergency Medicine Units in the Region of Southern Denmark; the project is based on an ongoing collaboration with Professor Annmarie Lassen established in 2012.

We have an ongoing collaboration and consultancy agreement with Professor Charlotte Gotthard Mørtz (Dermatology and Allergy, OUH). For several years we have supported a clinical database (AC Basen, OUH) with academic data management (data integrations, linkage of data, and data extraction). The database is hosted at the Odense Research Center for Anaphylaxis, Dermatology and Allergy, OUH.

In 2024 we are part of two projects, which are embedded in the Department of Clinical Development, Odense University Hospital. One project is about the evaluation of video consultations and the other project focuses on the reasons for patient nonattendance at medical appointments. For these two projects, we provide data analyses for the quantitative parts of the projects. These two projects will continue in 2025.

We have an ongoing collaboration with researchers from the departments of Haematology, Clinical Biochemistry and Pharmacology, and Clinical Microbiology on several projects related to tuberculosis, bacteremia, sepsis, and biomarkers.

In 2024 we have had two large ongoing projects sponsored by Janssen on biologic therapies and long-term clinical outcomes, and by Pfizer on COVID-19 long-term outcomes.

We have an ongoing collaboration and consultancy agreement with hospitals in Boston, USA (Brigham and Women's Hospital and Tufts Medical Center). We provide data analyses for a number of projects each year. The consultancy agreement is a result of a close collaboration with our adjunct professor in Boston.

**Regarding all working partners related to research projects please see the chapter "Research activities".**

# RESEARCH ACTIVITIES

The Research Unit of Clinical Epidemiology was established in 2009 with the purpose of handling all research and academic activities in the center. The unit is academically affiliated with the Department of Clinical Research at the University of Southern Denmark.

Several of the employees at the Center for Clinical Epidemiology have formal academic employment at the Department of Clinical Research. We have a clinical professorship, which is also linked to the daily management at the center, and academic affiliations (associate professors) of two biostatisticians and three clinical epidemiologists. The professor of the department, Bente Mertz Nørgård, is also nominated as Senior Epidemiologist at the Brigham and Women's Hospital, Boston, part-time lecturer at Harvard Medical School, and Adjunct Clinical Professor at Tufts University School of Medicine. Bente Mertz Nørgård is also an associate editor at the US medical journal (Inflammatory Bowel Diseases).

## **Four adjunct professors/associate professors**

The Research Unit of Clinical Epidemiology is affiliated with four adjunct professors/associate professors in clinical epidemiology. They are all affiliated with the Department of Clinical Research at the University of Southern Denmark:

Adjunct professor, Sonia Friedman, MD, Visiting Professor, Chief of Gastroenterology at Tufts Medical Center and Professor of Medicine at Tufts University School of Medicine, Boston. Sonia Friedman is an expert in chronic inflammatory bowel disease and reproduction health. At the same time, Sonia Friedman is an associate professor at Harvard University, Boston.

Adjunct professor, Pedro Manuel Sarmiento Rodrigues Póvoa, MD, Unidade de Cuidados Intensivos Polivalente, Hospital de São Francisco Xavier, Lisbon. Pedro Póvoa is an expert researcher within areas related to intensive care and patients suffering from sepsis. Pedro Póvoa has especially focused on the importance of C-reactive protein of which daily records exceed a single count in monitoring the patient's condition.

Adjunct professor, Fernando Godinho Zampieri, MD, Assistant Professor, Faculty of Medicine & Dentistry - Critical Care Medicine, University of Alberta, Canada. Fernando Zampieri is an expert researcher within critical care medicine and especially focuses on critically ill patients and enhanced biostatistical models.

Adjunct Associate Professor, Rahul S. Dalal, MD, MPH, Crohn's and Colitis Center, Brigham and Women's Hospital and Harvard Medical School. Rahul S. Dalal is an expert researcher within pain management strategies in inflammatory bowel diseases.

## **Research areas**

The employees at the Center for Clinical Epidemiology conduct their own initiated and funded research projects in collaboration with domestic and foreign researchers. Our research is mainly within the following areas (for the specific publications please refer to the last chapter 'Publications'):

- Covid-19
- Analgesics
- Acute medicine and intensive care
- Sepsis
- Human reproduction
- Chronic inflammatory bowel disease
- Chronic diseases in general
- Autoimmune diseases
- Musculoskeletal diseases
- Obstetrics and gynecology
- Psychiatry
- Geriatrics

## **Working partners related to research projects**

It is not meaningful to list all our research partners and co-authors of papers in this section. However, we want to highlight a number of research collaborators that have contributed significantly to our research protocols, the scientific papers in 2024, joint research funding, and shared PhD students/pre-graduate students.

We are particularly grateful for all the help from:

Professor Jette Ammentorp, Centre for Research in Patient Communication, Odense University Hospital and University of Southern Denmark and Odense University Hospital, Odense, Denmark.

Professor, Anmarie Lassen, Emergency Medicine Research Unit, University of Southern Denmark and Odense University Hospital, Odense C, Denmark.

Professor Jens Kjeldsen, Department of Medical Gastroenterology S, Odense University Hospital, and Research Unit of Medical Gastroenterology, Department of Clinical Research, University of Southern Denmark, 5000 Odense C, Denmark.



Professor Torben Knudsen, Department of Medical Gastroenterology, Hospital of Southwest Jutland, Esbjerg, Denmark, and Department of Regional Health Science, University of Southern Denmark.

Professor Jens Fedder, Centre of Andrology and Fertility Clinic, Odense University Hospital Department D, and Research Unit of Gynecology and Obstetrics, Department of Clinical Research, University of Southern Denmark.

Adjunct professor Sonia Friedman, Gastroenterology Division, Tufts Medical Center, Tufts University School of Medicine, Boston Massachusetts US

Adjunct professor Pedro Manuel Sarmiento Rodrigues Póvoa, Unidade de Cuidados Intensivos Polivalente, Hospital de São Francisco Xavier, Lisbon

Professor Ulrik Stenz Justesen, Department of Clinical Microbiology, Odense University Hospital and Research Unit of Clinical Microbiology, Department of Clinical Research, University of Southern Denmark

Professor Henrik Bjarke Vægter, Pain Center, Department of Anesthesiology and Intensive Care Medicine, Odense University Hospital and Pain Research Group, Department of Clinical Research, University of Southern Denmark

Professor Kirsten Fonager, Department of Social Medicine, Aalborg University Hospital, and Department of Clinical Medicine, Aalborg University

Rahul Dalal, Gastroenterologist in Inflammatory Bowel Diseases, Division of Gastroenterology, Hepatology and Endoscopy, Department of Medicine, Brigham and Women's Hospital, Harvard Medical School, Boston, MA, USA

For more details on our research areas, we kindly refer to our research strategy:

[Forskning \(ouh.dk\)](https://www.ouh.dk/forskning)

# PHD-STUDENTS

## **PhD-students supervised by the Center for Clinical Epidemiology staff members, 2024**

- Sara Bønløkke Simonsen: "Risk of cancer among women with prior cervical precancer: a register-based study". Ongoing.
- Line Holdgaard Thomsen: "Risk factors of epithelial ovarian cancer among women with endometriosis: An epidemiologic study based on Danish registries and an endometriosis-specific questionnaire". Ongoing.
- Alice Markussen: "Real-world treatment patterns and outcomes in patients with biliary tract cancer: Danish nationwide population-based analysis". Ongoing.
- Mette Louise Andersen: "Maternal Multiple Sclerosis: Neonatal Outcomes, Early Child Infections, and Maternal Postpartum Infections". Ongoing (thesis submitted).
- Julie Rasmussen: "Psychosocial consequences for patients diagnosed with inflammatory bowel disease at a young age". Defended in 2024.
- Anne-Sofie Faarvang: "The arterial wall in patients with diabetes: Do changes in arterial basement membrane proteins predict future arterial disease? Are remodelling processes altered?". Ongoing.
- Camilla Frimor: "How is second- and third-line treatment in Inflammatory Bowel Diseases used today, and is Therapeutic Drug Monitoring at least as effective, and potentially a more cost-efficient strategy when using these more expensive treatments?". Ongoing.
- Charlotte Nielsen Agergaard: "Anaerobic bacteremia; Clinical presentation, treatment response and outcome." Ongoing.

# ACADEMIC ASSESSMENT

In 2024 the staff at the Center for Clinical Epidemiology have

- worked as reviewers for scientific journals
- evaluated research protocols for local, national, and international scientific foundations
- associate and guest associate editors for the journal "Inflammatory Bowel Diseases"
- participated in scientific congresses
- given scientific oral presentations
- undertaken assessments of PhD protocols and dissertations for the Faculty of Health Sciences at the University of Southern Denmark and other universities in Denmark
- acted as chairman of the evaluation committee of PhD dissertations
- acted as a board member of the evaluation committee for a clinical professorship
- undertaken assessments for scientific positions at universities in Denmark
- been appointed as censors and undertaken censorship tasks for medical education (including public health, pharmacy, etc.) in Denmark
- supervised PhD students

# TEACHING

The staff at the center have trained, supervised, and examined bachelor students and master's thesis students at the Faculty of Health Sciences at the University of Southern Denmark. This comprises medical students and Master of Science in Health Science.

# FUNDINGS

The following foundations have supported projects in 2024:

- Louis-Hansen Fonden
- Aase og Ejnar Danielsens Fond
- TrygFonden
- Merck
- Pfizer
- Janssen
- JaschaFonden
- Karen Elise Jensens Fond
- Novo Nordisk Fonden
- Helsefonden
- Colitis-Crohns Foreningen
- Tufts University, Medical Center, Boston

# PUBLICATIONS

Scientific publications:

In 2024, 49 papers were published in peer-reviewed journals. Please refer to the list below:

---

**1. Hospital–Acquired Bloodstream Infections in Relation to Intensive Care Unit Stays During Hospitalization – A Population–Based Cohort Study**

Gradel, K. O., Coia, J. E., Chen, M., Nielsen, S. L., Jensen, T. G., Møller, J. K., Dessau, R. B. C. & Póvoa, P., 20. dec. 2024, I: Journal of Clinical Medicine. 13, 24, 13 s., 7783.

**2. D–PRISM: a global survey–based study to assess diagnostic and treatment approaches in pneumonia managed in intensive care**

Reyes, L. F., Serrano–Mayorga, C. C., Zhang, Z., Tsuji, I., De Pascale, G., Prieto, V. E., Mer, M., Sheehan, E., Nasa, P., Zangana, G., Avanti, K., Tabah, A., Shrestha, G. S., Bracht, H., Fatoni, A. Z., Abidi, K., bin Sulaiman, H., Eshwara, V. K., De Bus, L. & Hayashi, Y. & 12 flere, 22. nov. 2024, I: Critical Care. 28, 381.

**3. GLP–1 receptor agonists are not associated with an increased risk of ileus or intestinal obstruction in patients with inflammatory bowel disease – a Danish nationwide cohort study**

Nielsen, J., Friedman, S., Nørgård, B. M., Knudsen, T., Kjeldsen, J. & Wod, M., 7. nov. 2024

**4. Stroke in critically ill patients with respiratory failure due to COVID–19: Disparities between low–middle and high–income countries**

COVID–19 Critical Care Consortium Investigators & Póvoa, P. (Medlem af forfattergruppering), 1. nov. 2024, I: Heart & Lung. 68, s. 131–144

**5. Erratum to Neonatal outcomes in women with Multiple Sclerosis – Influence of disease activity: A Danish nationwide cohort study (Multiple Sclerosis and Related Disorders (2024) 85, (S2211034824001287), (10.1016/j.msard.2024.105549))**

---

---

Andersen, M. L., Jølvig, L. R., Iachina, M., Anru, P. L., Stenager, E., Knudsen, T. & Nørgård, B. M., nov. 2024, I: Multiple Sclerosis and Related Disorders. 91, 105899.

**6. Inflammatory Bowel Disease in Adults and Elderly: The Use of Selected Non-IBD Medication Examined in a Nationwide Cohort Study**

Lund, K., Zegers, F. D., Nielsen, J., Brodersen, J. B., Knudsen, T., Kjeldsen, J., Larsen, M. D. & Nørgård, B. M., nov. 2024, I: Inflammatory Bowel Diseases. 30, 11, s. 1965-1973

**7. The Impact of Comorbidity and Age on the Risk of Hospitalization and Mortality in Patients with Previous COVID-19 Infection: Based on Nationwide Data**

Lund, K., Nielsen, J., Kjeldsen, S., Póvoa, P., Knudsen, T., Nørgård, B. M. & Kjeldsen, J., nov. 2024, I: Journal of Clinical Medicine. 13, 21, 11 s., 6522.

**8. Prescription time trends in patients with high-impact chronic pain: A National Patient Registry Study**

Bruun, K. D., Thorarinsson, C. T., Vaegter, H. B., Zegers, F. D., Nørgård, B. M. & Wod, M., 28. okt. 2024, (E-pub ahead of print) I: European Journal of Pain.

**9. What are the clinical and research lessons learned from immunomodulators and other therapies during the COVID-19 pandemic?**

Sweeney, D. A. & Póvoa, P., 1. okt. 2024, I: Current Opinion in Critical Care. 30, 5, s. 420-426

**10. Early sepsis recognition: Is hypothermia the most neglected symptom?**

Papathanakos, G., Póvoa, P. & Blot, S., okt. 2024, I: Intensive and Critical Care Nursing. 84, 103776.

**11. Immunological effects of post-operative epidural analgesia versus oral opioids in VATS**

Holm, J. H., Andersen, C., Licht, P., Toft, P., Zegers, F. D., Lambertsen, K. L. & Brøchner, A. C., okt. 2024, I: Danish Medical Journal. 71, 10, 10 s., A09230582.

**12. Understanding, assessing and treating immune, endothelial and haemostasis dysfunctions in bacterial sepsis**

---

---

Girardis, M., David, S., Ferrer, R., Helms, J., Juffermans, N. P., Martin-Loeches, I., Povoa, P., Russell, L., Shankar-Hari, M., Iba, T., Coloretti, I., Parchim, N. & Nielsen, N. D., okt. 2024, I: Intensive Care Medicine. 50, 10, s. 1580–1592

**13. Constitutional Factors and Irradiation as Risk Factors for Thymoma: A European Case-Control Study**

Kærlev, L., Eriksson, M., Guénel, P., Merletti, F., Morales-Suárez-Varela, M., Ahrens, W., Jöckel, K.-H., Llopis-González, A., Wingren, G. & Simonato, L., 20. sep. 2024, I: International Journal of Environmental Research and Public Health. 21, 9, 15 s., 1241.

**14. New surgery and hospital-diagnosed infections in elderly patients with inflammatory bowel disease undergoing surgery – a nationwide cohort study**

Mertz Nørgård, B., Garvik, O. S., Zegers, F. D., Nielsen, J., Lund, K., Knudsen, T. & Kjeldsen, J., 3. sep. 2024, I: Journal of Crohn's and Colitis. 18, 9, s. 1406–1414

**15. Does Surgery Before Pregnancy in Women With Inflammatory Bowel Disease Increase the Risk of Adverse Maternal and Fetal Outcomes? A Danish national cohort study**

Friedman, S., Nielsen, J., Qvist, N., Knudsen, T., Kjeldsen, J., Sønnichsen-Dreehsen, A.-S. & Nørgård, B. M., 1. sep. 2024, I: The American Journal of Gastroenterology. 119, 9, s. 1875–1884

**16. Platelet transfusions in adult ICU patients with thrombocytopenia: A sub-study of the PLOT-ICU inception cohort study**

Anthon, C. T., Pène, F., Perner, A., Azoulay, E., Puxty, K., Van De Louw, A., Chawla, S., Castro, P., Povoa, P., Coelho, L., Metaxa, V., Kochanek, M., Liebrechts, T., Kander, T., Sivula, M., Andreasen, J. B., Nielsen, L. B., Hvas, C. L., Dufranc, E. & Canet, E. & 27 flere, , sep. 2024, I: Acta Anaesthesiologica Scandinavica. 68, 8, s. 1018–1030

**17. Septic shock in the immunocompromised cancer patient: a narrative review**

Nates, J. L., Pène, F., Darmon, M., Mokart, D., Castro, P., David, S., Povoa, P., Russell, L., Nielsen, N. D., Gorecki, G.-P., Gradel, K. O., Azoulay, E., Bauer, P. R. & Nine-i Investigators, 30. aug. 2024, I: Critical Care. 28, 16 s., 285.

**18. Colorectal cancer and association with anaerobic bacteraemia: A Danish nationwide population-based cohort study**

---



---

Justesen, U. S., Ellebæk, M. B., Qvist, N., Iachina, M., Frimodt-Møller, N., Søes, L. M., Skovgaard, S., Lemming, L., Samulioniene, J., Andersen, S. L., Dessau, R. B., Møller, J. K., Coia, J. E. & Gradel, K. O., aug. 2024, I: Journal of Infection. 89, 2, 8 s., 106212.

**19. Biomarkers in pulmonary infections: a clinical approach**

Póvoa, P., Coelho, L., Cidade, J. P., Ceccato, A., Morris, A. C., Salluh, J., Nobre, V., Nseir, S., Martin-Loeches, I., Lisboa, T., Ramirez, P., Rouzé, A., Sweeney, D. A. & Kalil, A. C., 17. jul. 2024, I: Annals of Intensive Care. 14, 15 s., 113.

**20. At-admission prediction of mortality and pulmonary embolism in an international cohort of hospitalised patients with COVID-19 using statistical and machine learning methods**

ISARIC Characterisation Group & Petersen, M. (Medlem af forfattergruppering), 16. jul. 2024, I: Scientific Reports. 14, 1, 16387.

**21. Use of Tramadol vs Traditional Opioids and Adverse Outcomes in Patients with Inflammatory Bowel Disease: A Danish Nationwide Cohort Study**

Dalal, R. S., Lund, K., Zegers, F. D., Friedman, S., Allegretti, J. R. & Nørgård, B. M., 3. jul. 2024, I: Inflammatory Bowel Diseases. 30, 7, s. 1121-1129

**22. Midazolam Indications and Dosing in Palliative Medicine: Results from a Multinational Survey**

Tranung, M., Solheim, T. S., Løhre, E. T., Marsaa, K., Faksvåg Haugen, D., Laird, B., Thronæs, M. & Due Larsen, M., jul. 2024, I: Current Oncology. 31, 7, s. 4093-4104

**23. Refining trial design in sepsis management: balancing realism with ideal outcomes**

Helms, J., Póvoa, P. & Jaber, S., jul. 2024, I: Intensive Care Medicine. 50, 7, s. 1126-1128

**24. The use of opioids nine months after surgery for Crohn's disease – a nationwide cohort study**

Nørgård, B. M., Thorarinsson, C. T., Zegers, F. D., Kjeldsen, J., Dalal, R. S., Lund, K. & Knudsen, T., jul. 2024, I: Alimentary Pharmacology & Therapeutics. 60, 1, s. 52-60

---

---

**25. Correction: The role of centre and country factors on process and outcome indicators in critically ill patients with hospital-acquired bloodstream infections**

Buetti, N., Tabah, A., Setti, N., Ruckly, S., Barbier, F., Akova, M., Aslan, A. T., Leone, M., Bassetti, M., Morris, A. C., Arvaniti, K., Paiva, J.-A., Ferrer, R., Qiu, H., Montrucchio, G., Cortegiani, A., Kayaaslan, B., De Bus, L., De Waele, J. J. & Timsit, J.-F. & 2 flere, , 1. jun. 2024, I: Intensive Care Medicine. 50, 6, s. 1017–1018 2 s.

**26. The role of centre and country factors on process and outcome indicators in critically ill patients with hospital-acquired bloodstream infections**

Buetti, N., Tabah, A., Setti, N., Ruckly, S., Barbier, F., Akova, M., Aslan, A. T., Leone, M., Bassetti, M., Morris, A. C., Arvaniti, K., Paiva, J.-A., Ferrer, R., Qiu, H., Montrucchio, G., Cortegiani, A., Kayaaslan, B., De Bus, L., De Waele, J. J. & Timsit, J.-F. & 2 flere, , jun. 2024, I: Intensive Care Medicine. 50, 6, s. 873–889

**27. Personalized mechanical ventilation guided by ultrasound in patients with acute respiratory distress syndrome (PEGASUS): study protocol for an international randomized clinical trial**

Sinnige, J. S., Smit, M. R., Ghose, A., de Grooth, H. J., Itenov, T. S., Ischaki, E., Laffey, J., Paulus, F., Póvoa, P., Pierrakos, C., Pisani, L., Roca, O., Schultz, M. J., Szuldrzynski, K., Tuinman, P. R., Zimatore, C. & Bos, L. D. J., 7. maj 2024, I: Trials. 25, 308.

**28. Challenge-verified thresholds for allergens mandatory for labeling: How little is too much for the most sensitive patient?**

Mortz, C. G., Eller, E., Garvik, O. S., Kjaer, H. F., Zuberbier, T. & Bindsvlev-Jensen, C., maj 2024, I: Allergy: European Journal of Allergy and Clinical Immunology. 79, 5, s. 1306–1316

**29. Choosing immunomodulating therapies for the treatment of COVID-19: Recommendations based on placebo-controlled trial evidence**

Sweeney, D. A., Lobo, S. M., Póvoa, P. & Kalil, A. C., maj 2024, I: Clinical Microbiology and Infection. 30, 5, s. 611–618

**30. Neonatal outcomes in women with Multiple Sclerosis – Influence of disease activity: A Danish nationwide cohort study**

Andersen, M. L., Jølvig, L. R., Iachina, M., Anru, P. L., Stenager, E., Knudsen, T. & Nørgård, B. M., maj 2024, I: Multiple Sclerosis and Related Disorders. 85, 105549.

---

---

**31. Biomarkers: Are They Useful in Severe Community–Acquired Pneumonia?**

Póvoa, P., Pitrowsky, M., Guerreiro, G., Pacheco, M. B. & Salluh, J. I. F., apr. 2024, I: *Seminars in Respiratory and Critical Care Medicine*. 45, 2, s. 200–206

**32. Vancomycin–resistant *Enterococcus faecium*: impact of ending screening and isolation in a Danish University hospital**

Hansen, S. G. K., Klein, K., Nymark, A., Andersen, L., Gradel, K. O., Lis-Toender, J., Oestergaard, C., Chen, M., Datcu, R., Skov, M. N., Holm, A. & Rosenvinge, F. S., apr. 2024, I: *Journal of Hospital Infection*. 146, s. 82–92

**33. Prevalence estimates of tuberculosis infection in adults in Denmark: a retrospective nationwide register–based cross–sectional study, 2010 to 2018**

Østergaard, A. A., Lillebaek, T., Petersen, I., Fløe, A., Worren Bøkan, E. H., Hilberg, O., Holden, I. K., Larsen, L., Colic, A., Wejse, C., Ravn, P., Nørgård, B. M., Bjerrum, S. & Johansen, I. S., 21. mar. 2024, I: *Eurosurveillance*. 29, 12, 8 s., 2300590.

**34. Decolonization strategies against multidrug resistant organisms in the ICU**

Póvoa, P., Ramirez, P. & Blot, S., 18. mar. 2024, I: *Intensive Care Medicine*. 50, 4, s. 577–579

**35. Real–Life Adherence to Venom Immunotherapy and Adrenaline Autoinjector**

Parke, L., Fomsgaard Kjaer, H., Sivertsen Garvik, O., Halken, S., Broesby–Olsen, S., Bindsløv–Jensen, C. & Mortz, C. G., 1. mar. 2024, I: *International Archives of Allergy and Immunology*. 185, 3, s. 228–236

**36. Challenges for a broad international implementation of the current severe community–acquired pneumonia guidelines**

Salluh, J. I. F., Póvoa, P., Beane, A., Kalil, A., Sendagire, C., Sweeney, D. A., Pilcher, D., Polverino, E., Tacconelli, E., Estenssoro, E., Frat, J. P., Ramirez, J., Reyes, L. F., Roca, O., Nseir, S., Nobre, V., Lisboa, T. & Martín–Loeches, I., mar. 2024, I: *Intensive Care Medicine*. 50, 4, s. 526–538

**37. Platelet transfusions in adult thrombocytopenic ICU patients: Protocol for a sub–study of the PLOT–ICU cohort**

---

---

Anthon, C. T., Pène, F., Perner, A., Azoulay, E., Puxty, K., Van De Louw, A., Chawla, S., Castro, P., Povoa, P., Coelho, L., Metaxa, V., Kochanek, M., Liebrechts, T., Kander, T., Sivula, M., Møller, M. H. & Russell, L., mar. 2024, I: Acta Anaesthesiologica Scandinavica. 68, 3, s. 434–440

**38. When to Stop Antibiotics in the Critically Ill?**

Nielsen, N. D., Dean, J. T., Shald, E. A., Conway Morris, A., Povoa, P., Schouten, J. & Parchim, N., mar. 2024, I: Antibiotics. 13, 3, 13 s., 272.

**39. Social factors and age play a significant role in cervical cancer and advanced-stage disease among Danish women**

Bønløkke, S., Blaakær, J., Steiniche, T. & Iachina, M., 23. feb. 2024, I: BMC Cancer. 24, 15 s., 259.

**40. Longitudinal Measurements of Blood Biomarkers in Patients with Crohn's Disease or Ulcerative Colitis Treated with Infliximab: Only the Latest Values in the Induction Period Predict Treatment Failure**

Gradel, K. O., Nørgård, B. M., Friedman, S., Kjeldsen, J. & Larsen, M. D., 6. feb. 2024, I: Journal of Clinical Medicine. 13, 4, 13 s., 926.

**41. Implication of Inflammatory Bowel Disease Diagnosed Before the Age of 18 for Achieving an Upper Secondary Education: A Nationwide Population-Based Cohort Study**

Rasmussen, J., Nørgård, B. M., Nielsen, R. G., Bøggild, H., Qvist, N., Brund, R. B. K., Bruun, N. H. & Fonager, K., 1. feb. 2024, I: Inflammatory Bowel Diseases. 30, 2, s. 247–256

**42. Older Adult-Onset of Inflammatory Bowel Diseases is Associated With Higher Utilization of Analgesics: A Nationwide Cohort Study**

Dalal, R. S., Nørgård, B. M., Zegers, F. D., Kjeldsen, J., Friedman, S., Allegretti, J. R. & Lund, K., 1. feb. 2024, I: The American Journal of Gastroenterology. 119, 2, s. 323–330

**43. Multicentric Study on the Clinical Mycology Capacity and Access to Antifungal Treatment in Portugal**

Fernandes, R., Sabino, R., Cunha, C., Cornely, O. A., Carvalho, A., Salmanton-García, J., PT Group for IFI Management Capacity & Póvoa, P. (Medlem af forfattergruppering), 24. jan. 2024, I: Mycopathologia. 189, 1, s. 15

---

---

**44. Correction: Thrombocytopenia and platelet transfusions in ICU patients: an international inception cohort study (PLOT-ICU)**

Anthon, C. T., Pène, F., Perner, A., Azoulay, E., Puxty, K., Van De Louw, A., Barratt-Due, A., Chawla, S., Castro, P., Póvoa, P., Coelho, L., Metaxa, V., Kochanek, M., Liebregts, T., Kander, T., Hästbacka, J., Andreasen, J. B., Péju, E., Nielsen, L. B. & Hvas, C. L. & 31 flere, , jan. 2024, I: Intensive Care Medicine. 50, 1, s. 154–155

**45. Paternal use of selective serotonin reuptake inhibitors and adverse health outcomes: A nationwide cohort study on 13,547 exposed children**

Garvik, O. S., Jølving, L. R., Lund, K., Friedman, S. & Nørgård, B. M., 2024, (E-pub ahead of print) I: Andrology.

**46. The association between paternal diabetes mellitus and successful pregnancy—Examined in a nationwide population undergoing reproductive treatment**

Sønnichsen-Dreehsen, A. S., Fedder, J., Wod, M., Thorarinsson, C. T. & Nørgård, B. M., 2024, (E-pub ahead of print) I: Andrology.

---

**47. Selected chronic diseases in children and adolescents conceived with intracytoplasmic sperm injection**

Mette Wod, Caroline Theilgaard Thorarinsson, Line Riis Jølving, Jan Nielsen, Sonia Friedman, Jens Fedder, Bente Mertz Nørgård, Eur J Obstet Gynecol Reprod Biol. 2025 Jan;304:127-133. doi: 10.1016/j.ejogrb.2024.11.023. Epub 2024 Nov 21.

**48. Paternal Inflammatory Bowel Disease and the Risk of Pregnancy Loss**

Sonia Friedman, Caroline Thingholm Thorarinsson, Mette Wod, Jens Fedder, Bente Mertz Nørgård, Inflamm Bowel Dis. 2024 Jun 29;izae132. doi: 10.1093/ibd/izae132. Online ahead of print.

**49. Comparative epidemiology of bacteraemia in two developed countries with ageing populations: tropical Singapore and temperate Denmark**

Wei, P.S.J., Zongbin, L., Hein, A.A., Coia, J.E., Chen, M., Nielsen, S.L., Jensen, T.G., Møller, J.K., Dessau, R.B., Póvoa, P., Gradel, K.O., Chow, A., for the SG-DK bacteremia study group (2024). Epidemiology and Infection, 152, e74.

---