

ANNUAL REPORT 2021

CENTER FOR CLINICAL EPIDEMIOLOGY

Center for Clinical Epidemiology
Research Unit for Clinical Epidemiology
OUH Odense University Hospital, Svendborg Hospital
Kløvervænget 30, entrance 216, ground floor east
DK-5000 Odense C

Contact:

Telephone: +45 2115 3599

E-mail: bente.noergaard@rsyd.dk

Web Danish: <http://www.ouh.dk/wm220632>

Web English: <https://en.ouh.dk/research/clinical-epidemiology/>



@clin_epi_OUH



Center for
Clinical Epidemiology

OUH
Odense
University Hospital

Region of
Southern Denmark

UNIVERSITY OF SOUTHERN DENMARK

Contents

WELCOME.....	3
ORGANIZATION.....	4
WORKING RELATIONS.....	5
RESEARCH ACTIVITIES.....	7
PHD-STUDENTS.....	9
ACADEMIC ASSESSMENT.....	10
TEACHING.....	11
FUNDINGS.....	12
PUBLICATIONS.....	13

WELCOME

We welcome everybody with an interest in clinical epidemiology and data analysis. We ask anyone with a project, advisory task or research project, in the need of assistance within clinical epidemiology and data analysis, to contact us.

The vision of Center for Clinical Epidemiology is to be known and respected for projects and research within clinical epidemiology at an international level, and to provide expert knowledge within a wide range of diseases and clinical epidemiological methods to solve issues regarding the prognosis for patients. We want the staff at the Center for Clinical Epidemiology to be desirable collaborators in local, regional, national, and international projects and research activities.

Our mission is to ensure correct diagnosis and treatment of all patients through research results and thereby to ensure that all clinical decisions in the treatment are evidence based. We focus on research that can be applied and implemented in the daily clinical practice.

Center for Clinical Epidemiology handles the following activities:

1. Special projects and consultancy services within clinical epidemiology and data analysis
2. Clinical epidemiological research and academic work

Apart from the above activities, the center houses and supports tasks for the RKKP (the regional clinical quality program - the Danish Clinical Registries).

In 2021 we published 43 peer reviewed articles in international medical journals, and we have brought external fundraising into a special focus of interest.

Bente Mertz Nørgård

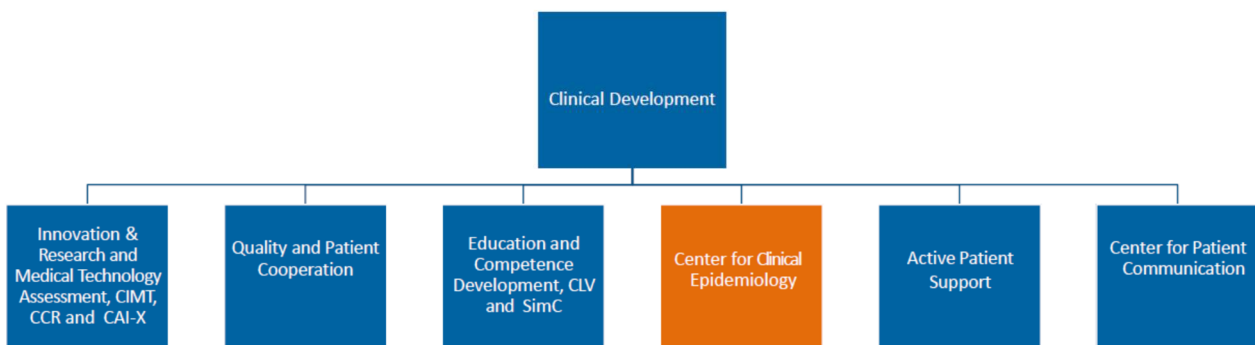
Professor and head of Center for Clinical Epidemiology and the Research Unit of Clinical Epidemiology

ORGANIZATION

The center is affiliated with Clinical Development, Odense University Hospital, as an independent unit and all research activities from the research unit refer to the Department of Clinical Research, University of Southern Denmark.

An overview of the staff at the Center for Clinical Epidemiology is available at our web-site: [Medarbejdere hos CKE \(ouh.dk\)](https://medarbejdere.hos.cke.ouh.dk)

Clinical Development



WORKING RELATIONS

Activities within the following special projects and consultancy tasks in particular have occupied the center's resources in 2021 (the following is not a complete list of consultancy functions):

The cooperation with Emergency Medicine, Odense University Hospital, concerning the daily operation of "The emergency cohort of Southern Denmark" has been ongoing for several years. The database comprises data on all patients admitted via the Emergency Medicine Units in the Region of Southern Denmark; the project is based on a cooperation with Professor Annmarie Lassen established in 2012 and is to be continued also in 2022.

We have a consultancy agreement with Professor Carsten Bindslev-Jensen (Dermatology and Allergy, OUH). During the last years we have supported a clinical database (AC Basen, OUH) with academic data management (new data integrations, linkage of data, data extraction). The database is hosted at Odense Research Center for Anaphylaxis, Dermatology and Allergy, OUH.

A consultancy agreement with Professor Jesper Ryg, Department of Geriatrics, is ongoing and we analyze data on the complexity of treatment of elder medical and geriatric patients with multimorbidities. The consultancy agreement has also focused on the analyses of data from The Falls Clinic, a specialized outpatient unit offering systematic evaluation and treatment of causes of falling and instability.

Our collaboration with Head of research Isik Somuncu Johansen and The Department of Infectious Diseases, Odense University Hospital, was established in 2017. We have an ongoing fruitful collaboration with researchers from the department on several projects related to tuberculosis, bacteremia, and sepsis biomarkers.

We have had an advisory cooperation with Professor Berit Schiøttz-Christensen, (Research Unit of General Practice, University of Southern Denmark) on a number of projects with relation to patients with back pain. Such projects include a variety of

analyses to determine important prognostic clinical outcomes. Based on the identified prognostic models algorithms are set up to develop individually adapted decision tools, and new projects within machine learning are in pipeline.

In general, for several of our partners within consultancy activities we experience an increasing interest regarding machine learning and artificial intelligence. Therefore, we have increased our general activities within this area and expanded our competences within the overall area related to big data, machine learning and artificial intelligence.

Regarding all working partners related to research projects please see the chapter "Research activities".

RESEARCH ACTIVITIES

The Research Unit of Clinical Epidemiology was established in 2009 with the purpose of handling all research and academic activities in the center. The unit is academically affiliated with the Department of Clinical Research at the University of Southern Denmark.

Several of the employees at the Center for Clinical Epidemiology have a formal academic employment at the Department of Clinical Research. We have a clinical professorship, which is also linked to the daily management at the center, and academic affiliations (associate professors) of two biostatisticians and four clinical epidemiologists. Furthermore, we have one clinical epidemiologist in a post.doc. position. The professor of the department, Bente Mertz Nørgård, is also nominated as Senior Epidemiologist at the Brigham and Women's Hospital, Boston, and lecturer, part-time, at Harvard Medical School, and associate editor at the following medical journal: Inflammatory Bowel Diseases.

Three adjunct professors

The Research Unit of Clinical Epidemiology has affiliated three adjunct professors in clinical epidemiology:

Sonia Friedman, MD, Visiting Professor Harvard Medical School and Brigham and Women's Hospital, Boston. Sonia Friedman is an expert within chronic inflammatory bowel disease and reproduction issues. At the same time, Sonia Friedman is an associated professor at Harvard University, Boston.

Pedro Manuel Sarmiento Rodrigues Póvoa, Unidade de Cuidados Intensivos Polivalente, MD, Hospital de São Francisco Xavier, Lisbon. Pedro Póvoa is an expert researcher within areas related to intensive care and patients suffering from sepsis. Pedro Póvoa has especially focused on the importance of C-reactive protein of which daily records exceed a single count in monitoring the patient's condition.

Fernando Godinho Zampieri, MD, HCor-Hospital do Coração, São Paulo, Brazil.

Fernando Zampieri is an expert researcher within critical care medicine and especially focuses on critically ill patients and enhanced biostatistical models.

Research areas

The employees at Center for Clinical Epidemiology conduct their own initiated and funded research projects in collaboration with domestic and foreign researchers. Our research is mainly within the following areas (for the specific publications please refer to the last chapter 'Publications'):

- Covid-19
- Machine learning and artificial intelligence
- Cancer
- Acute medicine and intensive care
- Sepsis
- Bowel diseases and chronic inflammatory bowel disease
- Human reproduction
- Chronic diseases
- Obstetrics
- Gynecology
- Psychiatry
- Geriatrics
- Social medicine

For more details on our research areas, we kindly refer to our research strategy:

[forskningsstrategi-2.pdf \(ouh.dk\)](#)

[research-strategy-2.pdf \(ouh.dk\)](#)

PHD-STUDENTS

Phd-students supervised by Center for Clinical Epidemiology staff members, 2021

- Ken Lund: Disease control in pediatric and adolescent patients with inflammatory bowel disease: aspects of Anti-TNF- α and physical activity. Defended 9 March 2021.
- Sara Bønløkke Simonsen: Project description for the study "Risk of cancer among women with prior cervical precancer: a register-based study". Ongoing.
- Line Holdgaard Thomsen: Risk factors of epithelial ovarian cancer among women with endometriosis: An epidemiologic study based on Danish registries and an endometriosis specific questionnaire. Ongoing.
- Karen Husby. Tentative title: "Pelvic organ prolapse surgery and risk of gynecological cancer". Ongoing.
- Alice Markussen, "Real-world treatment patterns and outcomes in patients with biliary tract cancer: Danish nationwide population-based analysis". Ongoing.

Upcoming PhD-students at the center:

- Mette Louise Andersen: Women with multiple sclerosis and pregnancy and child outcomes
- Simone Faurholt Simonsen: Pivmecillinam in the treatment of community-acquired lower urinary tract infections in women – short and long term implications

ACADEMIC ASSESSMENT

In 2021 the staff at the Center for Clinical Epidemiology has

- worked as reviewers for scientific journals
- evaluated research protocols for local, national, and international scientific foundations
- associate and guest associate editors for the journal "Inflammatory Bowel Diseases"
- participated in scientific congresses nationally and internationally (virtually, due to the corona pandemic)
- given scientific oral presentations (virtually, due to the corona pandemic)
- undertaken assessments of PhD protocols and dissertations for the Faculty of Health Sciences at the University of Southern Denmark and other universities in Denmark
- acted as chairman of the evaluation committee of PhD dissertations
- acted as board member of the evaluation committee for a clinical professorship
- undertaken assessments for scientific positions at universities in Denmark
- been appointed as censors and undertaken censorship tasks for the medical educations in Denmark
- supervised PhD students
- acted as members of OUH's Forskningsråd (Odense University Hospital Research Council)
- board membership of the Danish Association of Occupational Medicine (DAMO)

TEACHING

The staff at the center has trained, supervised, and examined a large number of bachelor students and master's thesis students at the Faculty of Health Sciences at University of Southern Denmark. This comprises medical students and Master of Science in Health Science.

FUNDINGS

The following foundations have supported a number of projects during 2021:

Region Syddanmarks pulje for Fri og Strategisk Forskning

Louis Hansen Fonden

Trygfonden

Beckett Fonden

Colitis Crohn Foreningen

Overlæge Jørgen Werner Schous og hustru Else Marie Schou, født Wanges Fond

The Pfizer Foundation

OUH Frie Pulje

Janssen Foundation

Dagmar Marshalls Fond

Takeda Foundation

Aase og Ejner Danielsens Fond

Helsefonden

PUBLICATIONS

Scientific publications

In 2021, 43 papers were published in peer-reviewed journals (extracted date: 11 December 2020). Please refer to **the list below** or our web-site

[http://findresearcher.sdu.dk/portal/en/organisations/klinisk-epidemiologi\(ad64bacf-78d9-4b18-84a3-53070d6bc23a\)/publications.html?filter=researchhttp%3A%2F%2F](http://findresearcher.sdu.dk/portal/en/organisations/klinisk-epidemiologi(ad64bacf-78d9-4b18-84a3-53070d6bc23a)/publications.html?filter=researchhttp%3A%2F%2F)

1. The impact of medical therapies and factors related to treatment procedures in women with rheumatoid arthritis and inflammatory bowel disease receiving assisted reproduction: a nationwide cohort study. Nørgård, B. M., Wod, M., Larsen, M. D., Friedman, S., Jølvig, L. R. & Fedder, J., 1. dec. 2021, I: Fertility and Sterility. 116, 6, s. 1492-1500
2. Post COVID-19 hospitalizations in patients with chronic inflammatory diseases – A nationwide cohort study. Nørgård, B. M., Zegers, F. D., Nielsen, J. & Kjeldsen, J., dec. 2021, I: Journal of Autoimmunity. 125, 7 s., 102739.
3. Pelvic organ prolapse following hysterectomy on benign indication: a nationwide, nulliparous cohort study. Husby, K. R., Gradel, K. O. & Klarskov, N., 21. okt. 2021, (E-pub ahead of print) I: American Journal of Obstetrics and Gynecology.
4. All-cause Mortality Due to Bacteremia during a 60-Day Non-Physician Healthcare Worker Strike. Jansåker, F., Holm, M. K. A., Gradel, K. O., Knudsen, J. D., Boel, J. B. & Danish Collaborative Bacteraemia Network (DACOBAN), 5. okt. 2021, I: Clinical infectious diseases: an official publication of the Infectious Diseases Society of America. 73, 7, s. e1758-e1761
5. Secondary pneumonias in critically ill patients with COVID-19: risk factors and outcomes. Póvoa, P., Martin-Loeches, I. & Nseir, S., 1. okt. 2021, I: Current Opinion in Critical Care. 27, 5, s. 468-473
6. Which Biomarkers Can Be Used as Diagnostic Tools for Infection in Suspected Sepsis? Póvoa, P. & Coelho, L., 1. okt. 2021, I: Seminars in Respiratory and Critical Care Medicine. 42, 5, s. 662-671
7. Postpartum surgical complications in women with inflammatory bowel disease after caesarian section: A Danish nationwide cohort study. Zegers, F. D., Nielsen, J., Nørgård, B. M. & Friedman, S., okt. 2021, I: Journal of Crohn's and Colitis.
8. The risk of chronic diseases and congenital malformations during childhood and adolescence after in utero exposure to thiopurines. Jølvig, L. R., Anru, P. L., Nielsen, J., Friedman, S. & Nørgård, B. M., okt. 2021, I: Alimentary Pharmacology & Therapeutics. 54, 8, s. 1061-1069
9. Changes in Glycolytic Pathway in SARS-COV 2 Infection and Their Importance in Understanding the Severity of COVID-19. Santos, A. F., Póvoa, P., Paixão, P., Mendonça, A. & Taborda-Barata, L., 10. sep. 2021, I: Frontiers in Chemistry. 9, 9 s., 685196.
10. Early bacterial identification among intubated patients with COVID-19 or influenza pneumonia: A European Multicenter Comparative Cohort Study. Rouzé, A., Martin-

- Loeches, I., Povoa, P., Metzeldard, M., Cheyron, D. D., Lambiotte, F., Tamion, F., Labruyere, M., Geronimi, C. B., Nieszkowska, A., Nyunga, M., Pouly, O., Thille, A. W., Megarbane, B., Saade, A., Diaz, E., Magira, E., Llitjos, J. F., Cilloniz, C., Ioannidou, I. & 31 flere, 1. sep. 2021, I: American Journal of Respiratory and Critical Care Medicine. 204, 5, s. 546-556
11. Use of Drugs with Anticholinergic Properties at Hospital Admission Associated with Mortality in Older Patients: A Danish Nationwide Register-Based Cohort Study. Sørensen, S. R., Frederiksen, J. D., Anru, P. L., Masud, T., Petrovic, M., Rosholm, J. U. & Ryg, J., 19. aug. 2021, (E-pub ahead of print) I: Drugs - Real World Outcomes.
 12. Association of Body Mass Index With All-Cause Mortality in Acutely Hospitalized Older Patients. Ryg, J., Anru, P. L., Engberg, H., Jorgensen, M. G., Masud, T., Christensen, K. & Andersen-Ranberg, K., 11. aug. 2021, (E-pub ahead of print) I: Journal of the American Medical Directors Association.
 13. Gut Microbiota Diversity and C-Reactive Protein Are Predictors of Disease Severity in COVID-19 Patients. Moreira-Rosário, A., Marques, C., Pinheiro, H., Araújo, J. R., Ribeiro, P., Rocha, R., Mota, I., Pestana, D., Ribeiro, R., Pereira, A., de Sousa, M. J., Pereira-Leal, J., de Sousa, J., Morais, J., Teixeira, D., Rocha, J. C., Silvestre, M., Príncipe, N., Gatta, N., Amado, J. & 10 flere, 19. jul. 2021, I: Frontiers in Microbiology. 12, 13 s., 705020.
 14. SARS-CoV-2 and cytomegalovirus co-infections—a case series of critically ill patients. Moniz, P., Brito, S. & Póvoa, P., 1. jul. 2021, I: Journal of Clinical Medicine. 10, 13, 5 s., 2792.
 15. Does Fatherhood Matter? Preconception Use of Biologics and Immunomodulators by Fathers With Immune-Mediated Diseases and Birth Outcomes of Their Offspring. Friedman, S. & Nørgård, B. M., jul. 2021, I: Gastroenterology. 161, 1, s. 24-27
 16. Optimizing antimicrobial drug dosing in critically ill patients. Póvoa, P., Moniz, P., Pereira, J. G. & Coelho, L., jul. 2021, I: Microorganisms. 9, 7, 27 s., 1401.
 17. Activities of daily living at hospital admission and estimated survival time of older patients. Ryg, J., Engberg, H., Anru, P. L., Pedersen, S. G. H., Jorgensen, M. G., Vinding, K. L., Masud, T. & Andersen-Ranberg, K., 28. jun. 2021, I: Age and Ageing. 50, 4, s. 1200-1207
 18. Decrease in all-cause 30-day mortality after bacteraemia over a 15-year period: A population-based cohort study in Denmark in 2000–2014. Holm, M. K. A., Jansåker, F., Gradel, K. O., Nielsen, R. T., Østergaard Andersen, C., Jarløv, J. O., Schønheyder, H. C. & Knudsen, J. D., 1. jun. 2021, I: International Journal of Environmental Research and Public Health. 18, 11, 12 s., 5982.
 19. Activities of daily living at hospital admission associated with mortality in geriatric patients with dementia: a Danish nationwide population-based cohort study. Veedfald, T., Andersen-Ranberg, K., Waldorff, F., Anru, P. L., Masud, T. & Ryg, J., jun. 2021, I: European Geriatric Medicine. 12, 3, s. 627-636
 20. Outcome of COVID-19 in hospitalized patients with chronic inflammatory diseases. A population based national register study in Denmark. Kjeldsen, J., Nielsen, J., Ellingsen, T., Knudsen, T., Nielsen, R. G., Larsen, M. D., Lund, K. & Nørgård, B. M., jun. 2021, I: Journal of Autoimmunity. 120, 102632.
 21. Risk factors of community-onset extended-spectrum β -lactamase Escherichia coli and Klebsiella pneumoniae bacteraemia: an 11-year population-based case–control–control study in Denmark. Richelsen, R., Smit, J., Laxsen Anru, P., Schønheyder, H. C. & Nielsen, H., jun. 2021, I: Clinical Microbiology and Infection. 27, 6, s. 871-877

-
22. Surgical repair of vaginal vault prolapse; a comparison between ipsilateral uterosacral ligament suspension and sacrospinous ligament fixation—a nationwide cohort study. Husby, K. R., Larsen, M. D., Lose, G. & Klarskov, N., jun. 2021, I: International Urogynecology Journal. 32, 6, s. 1441-1449
 23. Relationship between ventilator-associated pneumonia and mortality in COVID-19 patients: a planned ancillary analysis of the coVAPid cohort. Nseir, S., Martin-Loeches, I., Povoa, P., Metzeldard, M., Du Cheyron, D., Lambiotte, F., Tamion, F., Labruyere, M., Makris, D., Boulle Geronimi, C., Pinetonde Chambrun, M., Nyunga, M., Pouly, O., Mégarbane, B., Saade, A., Gomà, G., Magira, E., Llitjos, J. F., Torres, A., Ioannidou, I. & 24 flere, , 25. maj 2021, I: Critical care (London, England). 25, 11 s., 177.
 24. Evolving changes in mortality of 13,301 critically ill adult patients with COVID-19 over 8 months. Kurtz, P., Bastos, L. S. L., Dantas, L. F., Zampieri, F. G., Soares, M., Hamacher, S., Salluh, J. I. F. & Bozza, F. A., maj 2021, I: Intensive Care Medicine. 47, 5, s. 538-548
 25. Infliximab, Immunomodulators and Treatment Failures in Paediatric and Adolescent Patients with Crohn's Disease: a nationwide cohort study. Lund, K., Larsen, M. D., Knudsen, T., Kjeldsen, J., Nielsen, R. G. & Nørgård, B. M., 6. apr. 2021, I: Journal of Crohn's and Colitis. 15, 4, s. 575–582
 26. When should we use corticosteroids in severe community-acquired pneumonia? Póvoa, P., Coelho, L. & Salluh, J., 1. apr. 2021, I: Current Opinion in Infectious Diseases. 34, 2, s. 169-174
 27. Body mass index influences the risk of reoperation after first-time surgery for pelvic organ prolapse. A Danish cohort study, 2010–2016. Weltz, V., Guldborg, R., Larsen, M. D. & Lose, G., apr. 2021, I: International Urogynecology Journal. 32, 4, s. 801-808
 28. Hospitalization for COVID-19 in patients treated with selected immunosuppressant and immunomodulating agents, compared to the general population: a Danish cohort study. Nørgård, B. M., Nielsen, J., Knudsen, T., Nielsen, R. G., Larsen, M. D., Jølvig, L. R. & Kjeldsen, J., apr. 2021, I: British Journal of Clinical Pharmacology. 87, 4, s. 2111-2120
 29. Labour market affiliation among non-bullied colleagues at work units with reported bullying. Hansen, Å. M., Grynderup, M. B., Clausen, T., Bonde, J. P., Garde, A. H., Kaerlev, L., Kolstad, H. A. & Hogh, A., apr. 2021, I: International Archives of Occupational and Environmental Health. 94, 3, s. 547-556
 30. The Danish National Register of assisted reproductive technology: content and research potentials. Jølvig, L. R., Erb, K., Nørgård, B. M., Fedder, J. & Larsen, M. D., apr. 2021, I: European Journal of Epidemiology. 36, 4, s. 445-452
 31. Core Outcome Measures for Trials in People With Coronavirus Disease 2019: Respiratory Failure, Multiorgan Failure, Shortness of Breath, and Recovery. Tong, A., Baumgart, A., Evangelidis, N., Viecelli, A. K., Carter, S. A., Azevedo, L. C., Cooper, T., Bersten, A., Cervantes, L., Chew, D. P., Crowe, S., Douglas, I. S., Flemyng, E., Elliott, J. H., Hannan, E., Horby, P., Howell, M., Ju, A., Lee, J., Lorca, E. & 27 flere, , 1. mar. 2021, I: Critical Care Medicine. 49, 3, s. 503-516
 32. Using bayesian methods to augment the interpretation of critical care trials. an overview of theory and example reanalysis of the alveolar recruitment for acute respiratory distress syndrome trial. Zampieri, F. G., Casey, J. D., Shankar-Hari, M., Harrell, F. E. & Harhay, M. O., 1. mar. 2021, I: American Journal of Respiratory and Critical Care Medicine. 203, 5, s. 543-552
-

-
33. Clinical characteristics and outcomes among 2347 patients aged ≥ 85 years with major lymphoma subtypes: a Nordic Lymphoma Group study. Wästerlid, T., Oren Gradel, K., Eloranta, S., Glimelius, I., El-Galaly, T. C., Frederiksen, H. & Smedby, K. E., feb. 2021, I: British Journal of Haematology. 192, 3, s. 551-559
 34. Relationship between SARS-CoV-2 infection and the incidence of ventilator-associated lower respiratory tract infections: a European multicenter cohort study. Rouzé, A., Martin-Loeches, I., Póvoa, P., Makris, D., Artigas, A., Bouchereau, M., Lambiotte, F., Metzeldard, M., Cuchet, P., Boulle Geronimi, C., Labruyere, M., Tamion, F., Nyunga, M., Luyt, C. E., Labreuche, J., Pouly, O., Bardin, J., Saade, A., Asfar, P., Baudel, J. L. & 22 flere, , feb. 2021, I: Intensive Care Medicine. 47, 2, s. 188-198
 35. Trends in clinical profiles, organ support use and outcomes of patients with cancer requiring unplanned ICU admission: a multicenter cohort study. Zampieri, F. G., Romano, T. G., Salluh, J. I. F., Taniguchi, L. U., Mendes, P. V., Nassar, A. P., Costa, R., Viana, W. N., Maia, M. O., Lima, M. F. A., Cappi, S. B., Carvalho, A. G. R., De Marco, F. V. C., Santino, M. S., Perecmanis, E., Miranda, F. G., Ramos, G. V., Silva, A. R., Hoff, P. M., Bozza, F. A. & 1 flere, , feb. 2021, I: Intensive Care Medicine. 47, 2, s. 170-179
 36. Antimicrobial Stewardship in the Intensive Care Unit: The Role of Biomarkers, Pharmacokinetics, and Pharmacodynamics. Moniz, P., Coelho, L. & Póvoa, P., jan. 2021, I: Advances in Therapy. 38, 1, s. 164-179
 37. Biomarkers in the ICU: less is more? Not sure. Póvoa, P., Salluh, J. I. F. & Lisboa, T., jan. 2021, I: Intensive Care Medicine. 47, 1, s. 101-103
 38. Clinical course and outcomes of critically ill patients with COVID-19 infection: a systematic review. Serafim, R. B., Póvoa, P., Souza-Dantas, V., Kalil, A. C. & Salluh, J. I. F., jan. 2021, I: Clinical Microbiology and Infection. 27, 1, s. 47-54
 39. Postcardiac Arrest Neuroprognostication Practices: A Survey of Brazilian Physicians. Zhou, S. E., Barden, M. M., Gilmore, E. J., Pontes-Neto, O. M., Sampaio Silva, G., Kurtz, P., Oliveira-Filho, J., Cougo-Pinto, P. T., Zampieri, F. G., Napoli, N. J., Theriot, J. J., Greer, D. M. & Maciel, C. B., jan. 2021, I: Critical care explorations. 3, 1, 12 s., e0321
 40. Relation between Accumulated Air Pollution Exposure and Sub-Clinical Cardiovascular Disease in 33,723 Danish 60-74-Year-Old Males from the Background Population (AIR-CARD): A Method Article. Lambrechtsen, J., Mayntz, S. K., Engdam, K. B., Egstrup, K., Nielsen, J., Steffensen, F. H., Frohn, L. M., Brandt, J., Ketzler, M., Pyndt Diederichsen, A. C. & Lindholt, J. S., jan. 2021, I: Cardiology. 146, 1, s. 19–26
 41. The efficacy of assisted reproduction in women with a wide spectrum of chronic diseases – a review. Nørgård, B. M., Catalini, L., Jølvig, L. R., Larsen, M. D., Friedman, S. & Fedder, J., 2021, I: Clinical Epidemiology. 13, s. 477-500
 42. Mesalazine in Inflammatory Bowel Disease and COVID-19: Hospitalization and Adverse In-Hospital Outcomes Based on Nationwide Data. Kjeldsen S, Nielsen J, Nørgård BM, Kjeldsen J. 2021 Nov 24;izab299. doi: 10.1093/ibd/izab299. Online ahead of print
 43. Pregnancy-associated fracture risk in women with osteogenesis imperfecta, a nationwide register-based SCCSLykking, E. K., Kammerlander, H., Van Dijk, F., Prieto-Alhambra, D., Abrahamsen, B. & Folkestad, L., Apr 2021, In: Bone Reports. 14, Suppl. , 1 p., 100786
-