

ANNUAL REPORT 2023

Center for Clinical Epidemiology and Research Unit of Clinical Epidemiology

OUH Odense University Hospital, Svendborg Hospital
Kløvervænget 30, entrance 216, ground floor east
DK-5000 Odense C

Contact: Telephone: +45 2115 3599
E-mail: bente.noergaard@rsyd.dk



OUH
Odense
University Hospital

Region of
Southern Denmark

UNIVERSITY OF SOUTHERN DENMARK

Contents

WELCOME.....	3
SOCIAL MEDIA.....	4
ORGANIZATION.....	5
CONSULTANCY TASKS AND RELATIONS.....	6
RESEARCH ACTIVITIES.....	7
PHD-STUDENTS.....	10
ACADEMIC ASSESSMENT.....	11
TEACHING.....	12
FUNDINGS.....	13
PUBLICATIONS.....	14

WELCOME

We welcome everybody with an interest in clinical epidemiology and data analysis. We encourage anyone with a project, advisory task, or research project, in need of assistance with clinical epidemiology or data analyses, to contact us.

We contribute to evidence-based medicine on the prognosis of patients. The vision of the Center for Clinical Epidemiology is to be known and respected for projects and research within clinical epidemiology at an international level, and to provide expert knowledge within a wide range of diseases and clinical epidemiological methods to solve issues related to patient prognosis. We want the Center for Clinical Epidemiology staff to be desirable collaborators in local, regional, national, and international projects and research activities.

Our mission is to ensure that all clinical decisions in patient treatment are evidence-based. Therefore, we focus on research that can be applied to and implemented in daily clinical practice.

At the Center for Clinical Epidemiology, we concentrate on the following activities:

1. Projects and consultancy services within clinical epidemiology and data analysis
2. Clinical epidemiological research
3. Special projects related to clinical epidemiology in public sector services
4. Academic work affiliated with the Department of Clinical Research, University of Southern Denmark

Apart from the above activities, the Center for Clinical Epidemiology has hosted the RKKP (the regional clinical quality program - the Danish Clinical Registries) until the end of 2023.

In 2023 we published 49 peer-reviewed articles in international medical journals, and we have brought external fundraising into a continuous focus of interest.

Bente M Nørgård

Bente Mertz Nørgård
Professor and head of the Center for Clinical Epidemiology and the Research Unit of Clinical Epidemiology

SOCIAL MEDIA

Below you will find our websites and social media account:

Web Danish: <http://www.ouh.dk/wm220632>

Web English: <https://en.ouh.dk/research/clinical-epidemiology/>

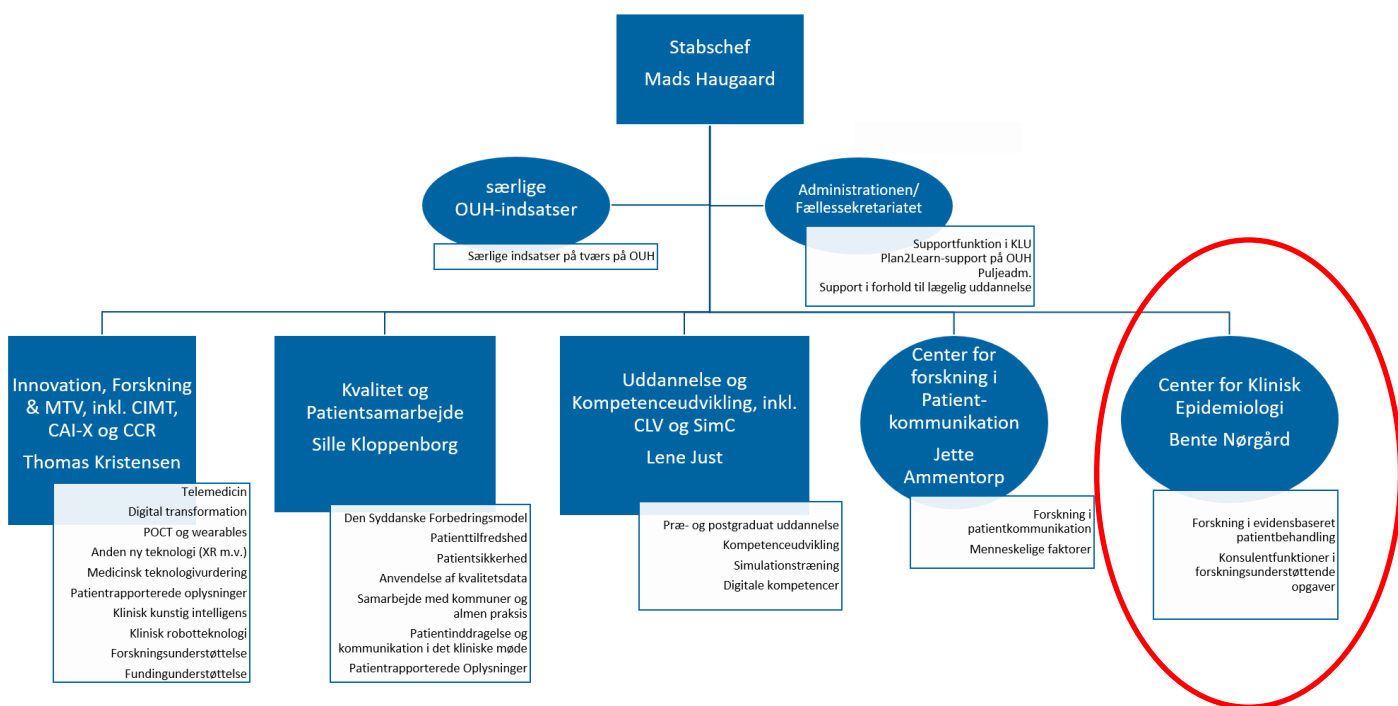
University of Southern Denmark website: <https://www.sdu.dk/da/forskning/klinisk-epidemiologi>

LinkedIn Profile:

LinkedIn  **@Center for Klinisk Epidemiologi, OUH**

ORGANIZATION

The Center for Clinical Epidemiology is embedded in the Department of Clinical Development, Odense University Hospital, as an independent unit. All research activities from the research unit refer to the Department of Clinical Research, University of Southern Denmark. The organisation diagram (in Danish) is shown below.



An overview of the staff at the Center for Clinical Epidemiology is available at our website: [Medarbejdere hos CKE \(ouh.dk\)](https://ouh.dk/medarbejdere hos CKE)

CONSULTANCY TASKS AND RELATIONS

Activities within the following special projects and consultancy tasks in particular have occupied the center's resources in 2023 (the following is not a complete list of consultancy functions):

The cooperation with Emergency Medicine, Odense University Hospital, concerning the daily operation of "The emergency cohort of Southern Denmark" has been ongoing for several years. The database comprises data on all patients admitted via the Emergency Medicine Units in the Region of Southern Denmark; the project is based on an ongoing collaboration with Professor Annmarie Lassen established in 2012.

We have an ongoing collaboration and consultancy agreement with Professor Charlotte Gotthard Mørtz (Dermatology and Allergy, OUH). For several years we have supported a clinical database (AC Basen, OUH) with academic data management (new data integrations, linkage of data, and data extraction). The database is hosted at the Odense Research Center for Anaphylaxis, Dermatology and Allergy, OUH.

In 2023 we have had two projects, which are embedded in the Department of Clinical Development, Odense University Hospital. One project is about the evaluation of video consultations and the other project focuses on the reasons for patient nonattendance at medical appointments. For these two projects, we provide data analyses for the quantitative parts of the projects. These two projects will continue in 2024.

Our collaboration with the Head of Research Professor Isik Somuncu Johansen and the Department of Infectious Diseases, Odense University Hospital, was established in 2017. We have an ongoing collaboration with researchers from the department on several projects related to tuberculosis, bacteremia, and sepsis biomarkers.

We have an ongoing collaboration and consultancy agreement with hospitals in Boston, USA (Brigham and Women's Hospital and Tufts Medical Center). We provide data analyses for a number of projects each year. The consultancy agreement is a result of a close collaboration with our adjunct professor in Boston.

Regarding all working partners related to research projects please see the chapter "Research activities".

RESEARCH ACTIVITIES

The Research Unit of Clinical Epidemiology was established in 2009 with the purpose of handling all research and academic activities in the center. The unit is academically affiliated with the Department of Clinical Research at the University of Southern Denmark.

Several of the employees at the Center for Clinical Epidemiology have formal academic employment at the Department of Clinical Research. We have a clinical professorship, which is also linked to the daily management at the center, and academic affiliations (associate professors) of two biostatisticians and four clinical epidemiologists. Furthermore, we have one clinical epidemiologist in a post.doc. position. The professor of the department, Bente Mertz Nørgård, is also nominated as Senior Epidemiologist at the Brigham and Women's Hospital, Boston, part-time lecturer at Harvard Medical School, and Adjunct Clinical Professor at Tufts University School of Medicine. Bente Mertz Nørgård is also an associate editor at the US medical journal (Inflammatory Bowel Diseases).

Three adjunct professors

The Research Unit of Clinical Epidemiology has affiliated three adjunct professors in clinical epidemiology:

Sonia Friedman, MD, Visiting Professor, Chief of Gastroenterology at Tufts Medical Center and Professor of Medicine at Tufts University School of Medicine, Boston. Sonia Friedman is an expert in chronic inflammatory bowel disease and reproduction issues. At the same time, Sonia Friedman is an associate professor at Harvard University, Boston.

Pedro Manuel Sarmiento Rodrigues Póvoa, Unidade de Cuidados Intensivos Polivalente, MD, Hospital de São Francisco Xavier, Lisbon. Pedro Póvoa is an expert researcher within areas related to intensive care and patients suffering from sepsis. Pedro Póvoa has especially focused on the importance of C-reactive protein of which daily records exceed a single count in monitoring the patient's condition.

Fernando Godinho Zampieri, MD, Assistant Professor, Faculty of Medicine & Dentistry - Critical Care Medicine, University of Alberta, Canada. Fernando Zampieri is an expert researcher within critical care medicine and especially focuses on critically ill patients and enhanced biostatistical models.

Research areas

The employees at the Center for Clinical Epidemiology conduct their own initiated and funded research projects in collaboration with domestic and foreign researchers. Our research is mainly within the following areas (for the specific publications please refer to the last chapter 'Publications'):

- Covid-19
- Machine learning and artificial intelligence
- Cancer
- Acute medicine and intensive care
- Sepsis
- Chronic inflammatory bowel disease
- Human reproduction
- Chronic diseases in general
- Autoimmune diseases
- Obstetrics and gynecology
- Psychiatry
- Geriatrics
- Social medicine

Working partners related to research projects

It is not meaningful to list all our research partners and co-authors of papers in this section. However, we want to highlight a number of research collaborators that have contributed significantly to our research protocols, the scientific papers in 2023, joint research funding, and shared PhD students/pre-graduate students.

We are particularly grateful for all the help from:

Professor Jens Kjeldsen, Department of Medical Gastroenterology S, Odense University Hospital, and Research Unit of Medical Gastroenterology, Department of Clinical Research, University of Southern Denmark, 5000 Odense C, Denmark.

Professor Torben Knudsen, Department of Medical Gastroenterology, Hospital of Southwest Jutland, Esbjerg, Denmark, and Department of Regional Health Science, University of Southern Denmark.

Professor Jens Fedder, Centre of Andrology and Fertility Clinic, Odense University Hospital Department D, and Research Unit of Gynecology and Obstetrics, Department of Clinical Research, University of Southern Denmark.

Adjunct professor Sonia Friedman, Gastroenterology Division, Tufts Medical Center, Tufts University School of Medicine, Boston Massachusetts US

Adjunct professor Pedro Manuel Sarmiento Rodrigues Póvoa, Unidade de Cuidados Intensivos Polivalente, MD, Hospital de São Francisco Xavier, Lisbon

Professor Ulrik Stenz Justesen, Department of Clinical Microbiology, Odense University Hospital and Research Unit of Clinical Microbiology, Department of Clinical Research, University of Southern Denmark.

Professor Henrik Bjarke Vægter, Pain Center, Department of Anesthesiology and Intensive Care Medicine, Odense University Hospital and Pain Research Group, Department of Clinical Research, University of Southern Denmark.

Professor Kirsten Fonager, Department of Social Medicine, Aalborg University Hospital, and Department of Clinical Medicine, Aalborg University.

Professor Jette Ammentorp. Centre for Research in Patient Communication, Odense University Hospital and University of Southern Denmark.

Rahul Dalal, Gastroenterologist in Inflammatory Bowel Diseases, Division of Gastroenterology, Hepatology and Endoscopy, Department of Medicine, Brigham and Women's Hospital, Harvard Medical School, Boston, MA, USA

For more details on our research areas, we kindly refer to our research strategy:

[Forskning \(ouh.dk\)](https://www.ouh.dk/forskning)

PHD-STUDENTS

PhD-students supervised by the Center for Clinical Epidemiology staff members, 2023

- Sara Bønløkke Simonsen: Project description for the study "Risk of cancer among women with prior cervical precancer: a register-based study". Ongoing.
- Line Holdgaard Thomsen: Risk factors of epithelial ovarian cancer among women with endometriosis: An epidemiologic study based on Danish registries and an endometriosis-specific questionnaire. Ongoing.
- Karen Husby: Tentative title: "Pelvic organ prolapse surgery and risk of gynecological cancer". Ongoing.
- Alice Markussen: "Real-world treatment patterns and outcomes in patients with biliary tract cancer: Danish nationwide population-based analysis". Ongoing.
- Mette Louise Andersen: Women with multiple sclerosis and pregnancy and child outcomes. Ongoing.
- Julie Rasmussen: Psychosocial consequences for patients diagnosed with inflammatory bowel disease at a young age. Ongoing.
- Anne-Sofie Faarvang: The arterial wall in patients with diabetes: Do changes in arterial basement membrane proteins predict future arterial disease? Are remodelling processes altered? Ongoing.

ACADEMIC ASSESSMENT

In 2023 the staff at the Center for Clinical Epidemiology has

- worked as reviewers for scientific journals
- evaluated research protocols for local, national, and international scientific foundations
- associate and guest associate editors for the journal "Inflammatory Bowel Diseases"
- participated in scientific congresses nationally and internationally
- given scientific oral presentations
- undertaken assessments of PhD protocols and dissertations for the Faculty of Health Sciences at the University of Southern Denmark and other universities in Denmark
- acted as chairman of the evaluation committee of PhD dissertations
- acted as board member of the evaluation committee for a clinical professorship
- undertaken assessments for scientific positions at universities in Denmark
- been appointed as censors and undertaken censorship tasks for medical educations (including public health, pharmacy etc.) in Denmark
- supervised PhD students
- board membership of the Danish Association of Occupational Medicine (DAMO)

TEACHING

The staff at the center has trained, supervised, and examined a large number of bachelor students and master's thesis students at the Faculty of Health Sciences at the University of Southern Denmark. This comprises medical students and Master of Science in Health Science.

FUNDINGS

The following foundations have supported a number of projects during 2023:

- Louis-Hansen Fonden
- Aase og Ejner Danielsens Fond
- Merck
- Pfizer
- Janssen
- Jascha Fonden
- Karen Elise Jensens Fond
- Brigham and Women's Hospital, Boston
- Tufts University, Medical Center, Boston

PUBLICATIONS

Scientific publications:

In 2023, 49 papers were published in peer-reviewed journals. Please refer to the list below:

- 1. Remdesivir and corticosteroids in the treatment of hospitalized COVID-19 patients**
Coelho, L., Falcão, F., Póvoa, P., Viegas, E., Martins, A. P., Carmo, E., Fonseca, C., Campos, L., Mansinho, K., Carmo, I., Soares, J., Solano, M., Mendes, D., Miranda, A. C., Carvalho, A., Mirco, A., Farinha, H., Aldir, I. & Correia, J., dec. 2023, I: Scientific Reports. 13, 6 s., 4482
- 2. Patients with elderly onset inflammatory bowel disease have a decreased chance of initiation of all types of medications and increased risk of surgeries-A nationwide cohort study**
Nørgård, B. M., Zegers, F. D., Knudsen, T., Kjeldsen, J., Lund, K., Brodersen, J. B. & Nielsen, J., 20. apr. 2023, (E-pub ahead of print) I: Alimentary Pharmacology & Therapeutics
- 3. Hysterectomy on benign indication and risk of pelvic organ prolapse surgery: A national matched cohort study**
Aagesen, A. H., Klarskov, N., Gradel, K. O. & Husby, K. R., 3. apr. 2023, (E-pub ahead of print) I: Acta Obstetrica et Gynecologica Scandinavica
- 4. Assisted Reproductive Technology Results Using Donor or Partner Sperm: A Danish Nationwide Register-Based Cohort Study**
Catalini, L., Fedder, J., Nørgård, B. M. & Jølvig, L. R., 29. mar. 2023, I: Journal of Clinical Medicine. 12, 7
- 5. Maternal Multiple Sclerosis and Health Outcomes Among the Children: A Systematic Review**
Andersen, M. L., Jølvig, L. R., Stenager, E., Knudsen, T. & Nørgård, B. M., mar. 2023, I: Clinical Epidemiology. 15, s. 375-389
- 6. Cervical cancer after the Manchester procedure: a nationwide cohort study**
Husby, K. R., Gradel, K. O. & Klarskov, N., 10. feb. 2023, (E-pub ahead of print) I: International Urogynecology Journal
- 7. Epidemiology and outcomes of hospital-acquired bloodstream infections in intensive care unit patients: the EUROACT-2 international cohort study**

Tabah, A., Buetti, N., Staiquly, Q., Ruckly, S., Akova, M., Aslan, A. T., Leone, M., Conway Morris, A., Bassetti, M., Arvaniti, K., Lipman, J., Ferrer, R., Qiu, H., Paiva, J. A., Povoas, P., De Bus, L., De Waele, J., Zand, F., Gurjar, M., Alsis, A., & 8 flere, 1. feb. 2023, I: Intensive Care Medicine. 49, 2, s. 178-190

8. **Stress Urinary Incontinence After Operations for Uterine Prolapse: A Nationwide Cohort Study**
Husby, K. R., Gradel, K. O. & Klarskov, N., 1. feb. 2023, I: Urogynecology (Hagerstown, Md.). 29, 2, s. 121-127
9. **Airway and Respiratory Devices in the Prevention of Ventilator-Associated Pneumonia**
Coelho, L., Moniz, P., Guerreiro, G. & Póvoa, P., feb. 2023, I: Medicina. 59, 2, 11 s., 199
10. **Diabetes mellitus and the risk of post-acute COVID-19 hospitalizations: a nationwide cohort study**
Nørgård, B. M., Zegers, F. D., Juhl, C. B., Kjeldsen, J. & Nielsen, J., feb. 2023, I: Diabetic Medicine. 40, 2, 10 s., e14986
11. **How to use biomarkers of infection or sepsis at the bedside: guide to clinicians**
Póvoa, P., Coelho, L., Dal-Pizzol, F., Ferrer, R., Huttner, A., Conway Morris, A., Nobre, V., Ramirez, P., Rouze, A., Salluh, J., Singer, M., Sweeney, D. A., Torres, A., Waterer, G. & Kalil, A. C., feb. 2023, I: Intensive Care Medicine. 49, 2, s. 142-153
12. **Increased Risk of Postpartum Infections After Caesarian and Vaginal Delivery in Women With Inflammatory Bowel Disease: A Danish Nationwide Cohort Study**
Friedman, S., Zegers, F. D., Jølvig, L. R., Nielsen, J. & Nørgård, B. M., feb. 2023, I: Inflammatory Bowel Diseases. 29, 2, s. 260-267
13. **Reply: The risk of pelvic organ prolapse after hysterectomy**
Husby, K. R., Gradel, K. O. & Klarskov, N., jan. 2023, I: American Journal of Obstetrics and Gynecology. 228, 1, s. 106-107
14. **Safety of Nicotine Replacement Therapy during Pregnancy: A Narrative Review**
Morales-Suárez-Varela, M., Puig, B. M., Kaerlev, L., Peraita-Costa, I. & Perales-Marín, A., jan. 2023, I: International Journal of Environmental Research and Public Health. 20, 1, 13 s., 250
15. **Health-related quality of life, anxiety, and self-image in young patients with Crohn's disease and ulcerative colitis**
Lund, K., Knudsen, T., Kjeldsen, J., Gaardskjær Nielsen, R. & Mertz Nørgård, B., 2023, I: JPGN Reports. 4, 1, 4 s., e287
16. **Adverse birth outcomes and early-life infections after in utero exposure to corticosteroids for inflammatory bowel disease: a Danish nationwide**

cohort study

Jølving, L. R., Nielsen, J., Andersen, M. L., Friedman, S. & Nørgård, B. M., dec. 2023, I: BMC Medicine. 21, 1, 11 s., 140

17. **COVID-19 Does Not Lead to an Increase in Corticosteroid Prescriptions in IBD Patients: A Nationwide Cohort Study**
Nørgård, B. M., Zegers, F. D., Nielsen, J., Knudsen, T. & Kjeldsen, J., 17. apr. 2023, (E-pub ahead of print) I: Inflammatory Bowel Diseases
18. **Identification of Distinct Clinical Phenotypes of Critically Ill COVID-19 Patients: Results from a Cohort Observational Study**
Cidade, J. P., de Souza Dantas, V. C., de Figueiredo Thompson, A., de Miranda, R. C. C. C., Mamfrim, R., Caroli, H., Escudini, G., Oliveira, N., Castro, T. & Póvoa, P., apr. 2023, I: Journal of Clinical Medicine. 12, 8, 10 s., 3035
19. **Increased risk of stress urinary incontinence surgery after hysterectomy for benign indication-a population-based cohort study**
Christoffersen NM, Klarskov N, Gradel KO, Husby KR. Am J Obstet Gynecol. 2023 Apr 26:S0002-9378(23)00266-1. doi: 10.1016/j.ajog.2023.04.029
20. **Ventilator associated tracheobronchitis and pneumonia: one infection with two faces**
Martin-Loeches I, Pova P, Nseir S. Intensive Care Med. 2023 May 9. doi: 10.1007/s00134-023-07086-9
21. **Use of Tramadol vs Traditional Opioids and Adverse Outcomes in Patients with Inflammatory Bowel Disease: A Danish Nationwide Cohort Study**
Dalal, R. S., Lund, K., Zegers, F. D., Friedman, S., Allegretti, J. R. & Nørgård, B. M., 31. jul. 2023, (E-pub ahead of print) I: Inflammatory Bowel Diseases
22. **Effect of surgery on the long-term use of opioids in patients with degenerative back disorders: a retrospective register-based study**
Iachina, M., Wod, M., Garvik, O. S. & Schiøttz-Christensen, B., 31. aug. 2023, (E-pub ahead of print) I: European Spine Journal
23. **Who are the vulnerable lung cancer patients at risk for not receiving first-line curative or palliative treatment?**
Langballe, R., Erik, J., Maria, I., Randi Valbjørn, K., Jeanette Haar, E., Mads Nordahl, S., Uffe, B., Ole, H., Susanne Oksbjerg, D. & Pernille Envold, B., 1. sep. 2023, (E-pub ahead of print) I: Acta Oncologica. s 1-8 8 s
24. **A population-based nationwide study on total colectomy for ulcerative colitis and risk of ten prevalent inflammatory or autoimmune diseases**
Mark-Christensen, A., Jølving, L. R., Anru, P. L., Murray, J. A., Nielsen, R. G., Qvist, N., Laurberg, S., Engberg, H., Kjeldsen, J. & Nørgård, B. M., 2023, (E-pub ahead of print) I: Scandinavian Journal of Gastroenterology

25. **Patients with multiple sclerosis: COVID-19 related disease activity and hospitalisations based on a nationwide cohort study**
Andersen, M. L., Zegers, F. D., Jølvig, L. R., Knudsen, T., Stenager, E. & Nørgård, B. M., 25. sep. 2023, (E-pub ahead of print) I: Multiple Sclerosis and Related Disorders. 79, s. 105031
26. **Older Adult-Onset of Inflammatory Bowel Diseases Is Associated With Higher Utilization of Analgesics: A Nationwide Cohort Study**
Rahul S Dalal, Bente Mertz Nørgård, Floor D Zegers, Jens Kjeldsen, Sonia Friedman, Jessica R Allegretti, Ken Lund, 2023, 2023. The American journal of gastroenterology
27. **Interpretations of the Role of Plasma Albumin in Prognostic Indices: A Literature Review**
Gradel, K. O., 22. sep. 2023, I: Journal of Clinical Medicine. 12, 19
28. **Psychiatric disorders, diagnosed in psychiatric clinics, in patients with back pain: A cohort study**
Iachina, M., Ljungdahl, P., Nørgård, B. M., Garvik, O., Stenager, E. & Schiøttz-Christensen, B., 8. jun. 2022, (E-pub ahead of print) I: Scandinavian Journal of Public Health
29. **Severe community-acquired pneumonia: in search of the guiding star**
Póvoa, P., Nseir, S. & Salluh, J., jun. 2023, I: Intensive Care Medicine. 49, 6, s. 656-658
30. **Current approach to fever of unknown origin in the intensive care unit**
Guerreiro, G. & Póvoa, P., okt. 2023, I: Intensive and Critical Care Nursing. 78, 103444
31. **Dichotomy between ventilator associated-pneumonia/tracheobronchitis: did you ask the lung its opinion? Author's reply**
Martin-Loeches, I., Povoas, P. & Nseir, S., aug. 2023, I: Intensive Care Medicine. 49, 8, s. 1034-1035
32. **Endothelial dysfunction triggers acute respiratory distress syndrome in patients with sepsis: a narrative review**
Cusack, R., Bos, L. D., Povoas, P. & Martin-Loeches, I., 2023, I: Frontiers in Medicine. 10, 11 s., 1203827
33. **Hydroxychloroquine: Time for Reappraisal of Its Effect in COVID-19 Patients**
de Souza Dantas, V. C., Cidade, J. P. & Póvoa, P., 25. mar. 2023, Annual Update in Intensive Care and Emergency Medicine 2023. Vincent, J-L. (red.). Springer, s. 431-439 (Annual Update in Intensive Care and Emergency Medicine)
34. **Implication of Inflammatory Bowel Disease Diagnosed Before the Age of 18 for Achieving an Upper Secondary Education: A Nationwide Population-Based Cohort Study**
Rasmussen, J., Nørgård, B. M., Nielsen, R. G., Bøggild, H., Qvist, N., Brund, R. B. K.,

Bruun, N. H. & Fonager, K., 21. aug. 2023, (E-pub ahead of print) I: Inflammatory Bowel Diseases

35. **Patients with multiple sclerosis: COVID-19 related disease activity and hospitalisations based on a nationwide cohort study**
Andersen, M. L., Zegers, F. D., Jølving, L. R., Knudsen, T., Stenager, E. & Nørgård, B. M., 25. sep. 2023, (E-pub ahead of print) I: Multiple Sclerosis and Related Disorders. 79, s. 105031
36. **Inflammatory bowel disease in adults and elderly: The use of selected non-IBD medication examined in a nationwide cohort study**
Lund, K., Knudsen, T., Larsen, M. D., Nielsen, J., Nørgård, B. M. & Kjeldsen, J., 4. okt. 2023
37. **Effects of Demographic and Socio-Economic Factors on Investigation Time of Lung Cancer Patients in Denmark: A Retrospective Cohort Study**
Iachina, M., Anru, P. L. & Jakobsen, E., 2023, I: Health Services Research & Managerial Epidemiology. 10, s. 23333928231206627
38. **Causes of Patient Nonattendance at Medical Appointments: Protocol for a Mixed Methods Study**
Schwalbe, D., Sodemann, M., Iachina, M., Nørgård, B. M., Chodkiewicz, N. H. & Ammentorp, J., 3. nov. 2023, I: JMIR Research Protocols. 12, s. e46227
39. **Paternal preconception exposure to non-steroid anti-inflammatory drugs or opioids and adverse birth outcomes: A nationwide registry-based cohort study**
Lund, K., Garvik, O. S., Aagaard, S. M., Jølving, L. R., Larsen, M. D., Damkier, P. & Nørgård, B. M., 8. nov. 2023, (E-pub ahead of print) I: Andrology
40. **Detection of infections by computerized capture of peaks in longitudinally measured C-reactive protein levels**
Garvik, O. S., Póvoa, P., Vinholt, P. J., Nielsen, S. L., Jensen, T. G., Frederiksen, H., Chen, M., Dessau, R. B., Coia, J. E., Møller, J. K. & Gradel, K. O., 14. nov. 2023, (E-pub ahead of print) I: Biomarkers in Medicine
41. **The IBD-FITT study - moderate-intensity exercise for patients with inflammatory bowel disease with moderate disease activity: an open-label randomized controlled trial**
Lund, K., Knudsen, T., Kjeldsen, J., Nielsen, R. G., Juhl, C. B. & Nørgård, B. M., 20. nov. 2023, I: Trials. 24, 1, s. 742
42. **Thrombocytopenia and platelet transfusions in ICU patients: an international inception cohort study (PLOT-ICU)**
Anthon, C. T., Pène, F., Perner, A., Azoulay, E., Puxty, K., Van De Louw, A., Barratt-Due, A., Chawla, S., Castro, P., Póvoa, P., Coelho, L., Metaxa, V., Kochanek, M., Liebrechts, T., Kander, T., Hästbacka, J., Andreasen, J. B., Péju, E., Nielsen, L. B., Hvas, C. L., & 5 flere, nov. 2023, I: Intensive Care Medicine. 49, 11, s. 1327-1338

43. **Evaluation of the Kinetics of Pancreatic Stone Protein as a Predictor of Ventilator-Associated Pneumonia**
Ceccato, A., Camprubí-Rimblas, M., Bos, L. D. J., Póvoa, P., Martín-Loeches, I., Forné, C., Areny-Balagueró, A., Campaña-Duel, E., Morales-Quinteros, L., Quero, S., Ramírez, P., Esperatti, M., Torres, A., Blanch, L. & Artigas, A., okt. 2023, I: *Biomedicines*. 11, 10, 13 s., 2676.
44. **Kinetics of C-Reactive Protein and Procalcitonin in the Early Identification of ICU-Acquired Infections in Critically Ill COVID-19 Patients**
Cidade, J. P., Coelho, L. & Póvoa, P., okt. 2023, I: *Journal of Clinical Medicine*. 12, 19, 11 s., 6110.
45. **Putting your trust in ICU clinical trials: the journal's role**
Hodgson, C. L., Póvoa, P. & Citerio, G., 16. okt. 2023, (E-pub ahead of print) I: *Intensive Care Medicine*.
46. **Subsyndromal Delirium in Critically Ill Patients—Cognitive and Functional Long-Term Outcomes**
Paulino, M. C., Conceição, C., Silvestre, J., Lopes, M. I., Gonçalves, H., Dias, C. C., Serafim, R., Salluh, J. I. F. & Póvoa, P., okt. 2023, I: *Journal of Clinical Medicine*. 12, 19, 15 s., 6363.
47. **Challenge-verified thresholds for allergens mandatory for labeling: How little is too much for the most sensitive patient?**
Mortz, C. G., Eller, E., Garvik, O. S., Kjaer, H. F., Zuberbier, T. & Bindslev-Jensen, C., 3. sep. 2023, (E-pub ahead of print) I: *Allergy: European Journal of Allergy and Clinical Immunology*.
48. **Real-Life Adherence to Venom Immunotherapy and Adrenaline Autoinjector Subject Area: Immunology and Allergy**
Parke, L., Kjaer, H. F., Garvik, O.S., Halcken, S, Broesby-Olsen, S, Bindslev-Jensen, C, Mortz, C. G. *Int Arch Allergy Immunol*. 2023 Dec 5:1-9. doi: 10.1159/000535294. Online ahead of print.
49. **Nurse navigation, symptom monitoring and exercise in vulnerable patients with lung cancer: feasibility of the NAVIGATE intervention**
Langballe, R., Svendsen, L., Jakobsen, E., Dalton, S. O., Karlsen, R. V., Iachina, M., Freund, K. M., Leclair, A., Jørgensen, L. B., Skou, S. T., Ehlers, J. H., Torenholt, R., Svendsen, M. N. & Envold Bidstrup, P., 20. dec. 2023, I: *Scientific Reports*. 13, 1, 22744.