

PainData årsrapport for TSC med regionsfunktion for patienter med kroniske komplekse smerter

Periode: 01.01.24 til 31.12.24

Tabel 1a: Udvikling i svarprocent for patientstartskema og patientslutschema over de seneste 3 år.

% besvaret		2022	2023	2024
Standard start = 80%				
Standard slut = 50%				
Samlet	Start	82.7%	81.0%	82.8%
	Slut	43.6%	39.4%	41.6%
207	Start	88.2%	90.7%	87.5%
	Slut	42.3%	33.9%	36.3%
208	Start	73.0%	74.6%	80.1%
	Slut	32.3%	39.0%	40.2%
210	Start	92.1%	91.3%	89.7%
	Slut	46.3%	40.8%	36.0%
235	Start	82.8%	82.0%	82.0%
	Slut	40.8%	40.3%	42.3%
256	Start	-	87.8%	79.4%
	Slut	-	40.0%	47.3%
257	Start	81.7%	82.3%	80.1%
	Slut	39.1%	40.1%	39.8%
277	Start	91.9%	90.8%	90.4%
	Slut	48.7%	44.9%	44.6%
278	Start	70.5%	78.0%	73.5%
	Slut	46.3%	42.6%	40.3%
280	Start	-	63.6%	77.1%
	Slut	-	10.3%	47.3%
281	Start	78.9%	81.5%	81.2%
	Slut	46.0%	35.3%	41.7%
411	Start	80.5%	53.1%	66.0%
	Slut	39.9%	35.4%	35.6%

Tabel 1b: Antal indkaldte patienter og forløbsstatus for patienter i 2024.

2024		Indkaldt	Afsluttede forløb	Viderehenviste	Aflyste forløb
Samlet	Antal	9041	4229	272	752
	%	100.0%	100.0%	3.0%	8.3%
207	Antal	891	330	61	125
	%			6.8%	14.0%
208	Antal	783	474	0	58
	%			0.0%	7.4%
210	Antal	472	168	128	112
	%			27.1%	23.7%
235	Antal	566	309	37	57
	%			6.5%	10.1%
256	Antal	687	422	0	3
	%			0.0%	0.4%
257	Antal	593	248	8	57
	%			1.3%	9.6%
277	Antal	2167	1329	19	135
	%			0.9%	6.2%
278	Antal	334	116	0	18
	%			0.0%	5.4%
280	Antal	526	238	0	19
	%			0.0%	3.6%
281	Antal	1594	420	5	114
	%			0.3%	7.2%
411	Antal	428	175	14	54
	%			3.3%	12.6%

Table 2: Patient characteristics for patients with **FØRSTE KONSULTATIONS DATO in 2024 and with completion of PRO start schema.**

	Samlet	207	208	210	235	256	257	277	278	280	281	411
	%	%	%	%	%	%	%	%	%	%	%	%
Kvinder	69.1%	67.1%	72.9%	70.7%	65.6%	72.8%	72.0%	67.1%	72.7%	64.8%	69.7%	67.7%
Arbejdssituation												
I ordinært arbejde	15.7%	15.3%	16.5%	7.1%	18.9%	14.9%	16.0%	13.8%	22.6%	17.1%	17.2%	13.1%
Sygemeldt	22.8%	19.7%	28.4%	12.6%	18.9%	17.4%	24.2%	24.7%	20.8%	23.1%	23.7%	20.6%
Ledig	4.2%	4.4%	3.7%	4.7%	4.4%	4.1%	2.7%	4.1%	5.7%	5.2%	4.4%	2.8%
Pension	27.8%	29.1%	16.5%	42.5%	31.6%	30.1%	28.0%	28.3%	17.0%	25.2%	28.9%	32.7%
Flexjob	8.9%	10.0%	11.3%	16.5%	6.6%	7.0%	11.3%	9.0%	11.3%	5.6%	8.1%	4.7%
Studerende	2.7%	3.4%	4.0%	3.9%	1.3%	2.5%	1.7%	3.0%	3.1%	3.8%	1.8%	2.8%
Afklaringsforløb	12.8%	13.8%	16.5%	7.1%	11.4%	19.0%	11.3%	12.0%	15.1%	13.6%	10.7%	18.7%
Uddannelse												
Grundskole	16.2%	15.4%	14.2%	11.7%	15.7%	14.6%	17.1%	17.5%	8.8%	13.5%	18.5%	14.8%
Gymnasial	6.8%	6.4%	8.3%	9.4%	5.8%	4.4%	7.9%	7.1%	6.9%	8.2%	6.4%	3.7%
Erhvervsfaglig	31.6%	31.3%	33.2%	32.8%	32.3%	35.6%	30.8%	31.1%	27.7%	27.8%	31.4%	38.9%
Kort v.gående	11.3%	9.8%	10.8%	13.3%	12.1%	14.3%	10.6%	10.1%	14.5%	11.0%	11.7%	13.9%
Ml-lang v.gående	22.9%	25.2%	25.9%	21.8%	21.1%	22.5%	24.0%	21.7%	27.6%	21.0%	22.9%	19.5%
Lang v.gående	4.9%	6.1%	4.3%	4.7%	5.4%	2.5%	3.8%	5.4%	8.8%	8.9%	3.4%	3.7%
Familieforhold												
Gift/Samlevende	68.4%	66.8%	70.8%	69.0%	73.2%	62.6%	68.9%	64.9%	70.0%	62.4%	74.4%	67.6%

Table 3: Smertekarakteristika for patienter med **FØRSTE KONSULTATIONS DATO i 2024** og med besvarelse af PRO startskema.

	Samlet	207	208	210	235	256	257	277	278	280	281	411
	gns	gns	gns	gns	gns	gns	gns	gns	gns	gns	gns	gns
Smerteintensitet gns seneste 7 dage (0-10)	7.42	7.49	7.21	7.03	7.54	7.37	7.35	7.44	7.34	7.59	7.46	7.15
Insomni (0-28)	15.69	15.3	15.34	16.45	16.25	16.14	16.48	15.47	14.44	16.24	15.46	16.83
Insomni ≥ 14 (%)	64.9%	60.0%	57.6%	69.0%	72.5%	71.8%	67.8%	61.8%	60.0%	68.8%	65.6%	78.7%
Katastrofering (0-52)	27.45	26.52	26.88	24.15	28.23	27.97	26.95	-	29.18	30.8	27.24	25.51
Katastrofering ≥ 30 (%)	42.9%	40.1%	40.0%	32.5%	46.5%	43.0%	40.5%	-	47.0%	55.3%	42.9%	33.0%
Bevægeangst (0-52)	31.47	30.51	30.7	30.27	31.57	33.05	31.59	-	32.53	33.08	31.17	30.91
Bevægeangst ≥ 32 (%)	42.7%	37.1%	36.0%	41.0%	42.0%	51.9%	42.4%	-	48.3%	55.2%	41.0%	38.1%
WHO-Trivsel (0-100)	34.33	36.24	32.65	34.05	32.3	33.35	33.91	34.48	38.04	30.19	35.71	33.25
WHO ≤ 35 (%)	53.1%	48.1%	56.6%	48.8%	57.5%	57.5%	52.2%	53.1%	44.9%	67.0%	50.5%	47.9%
<u>1-item Screening</u>												
Katastrofering (0-10)	6.78	6.34	6.44	5.78	6.95	6.74	6.63	7.16	6.72	7.19	6.72	6.07
Bevægeangst (0-10)	5.4	4.7	4.87	5.28	5.01	5.47	5.23	6.07	5.24	5.58	5.25	4.27
Depression (0-10)	5.09	5.1	5.07	4.62	4.99	5.19	5.13	-	4.77	5.89	4.99	4.8
Stress (0-10)	4.8	4.78	4.89	4.27	4.67	5.13	4.45	5.14	4.69	5.29	4.36	4.67
<u>Livskvalitet (PROMIS10)</u>												
Fysisk helbred (4-20)	8.84	8.92	9	8.97	8.62	8.68	8.67	8.86	8.74	8.61	8.92	8.98
Psykisk helbred (0-100)	9.72	9.76	9.53	10.05	9.53	9.46	9.86	9.92	9.72	8.95	9.81	9.53

Table 4: Selvrapporteret forbedring, udbytte af behandlingen og tilfredshed for patienter, der er afsluttet i 2024 og har besvaret PRO afslutningsskema.

	Samlet	207	208	210	235	256	257	277	278	280	281	411
	%	%	%	%	%	%	%	%	%	%	%	%
<u>PGIC efter forløb</u>												
Meget værre	3.1%	5.8%	1.3%	0.0%	2.9%	3.4%	2.3%	3.1%	12.5%	7.7%	1.4%	0.0%
Værre	5.6%	5.8%	6.3%	10.0%	8.6%	2.3%	4.5%	3.4%	12.5%	16.9%	4.8%	0.0%
Lidt værre	6.3%	5.8%	8.8%	3.3%	4.3%	3.4%	9.1%	6.2%	6.3%	13.8%	4.1%	9.1%
Uændret	43.0%	50.0%	41.3%	40.0%	44.3%	47.7%	45.5%	42.9%	43.8%	38.5%	40.7%	40.9%
Lidt bedre	19.8%	19.2%	21.3%	26.7%	20.0%	21.6%	15.9%	21.4%	6.3%	12.3%	19.3%	18.2%
Bedre	15.3%	9.6%	13.8%	13.3%	11.4%	17.0%	13.6%	16.8%	12.5%	9.2%	17.9%	27.3%
Meget bedre	6.9%	3.8%	7.5%	6.7%	8.6%	4.5%	9.1%	6.2%	6.3%	1.5%	11.7%	4.5%
<u>Oplevet udbytte af behandling</u>												
Intet	16.0%	15.4%	6.8%	13.3%	16.7%	11.3%	5.3%	16.6%	50.0%	39.3%	7.7%	7.7%
Lille	24.6%	15.4%	22.0%	13.3%	22.2%	22.6%	26.3%	25.5%	8.3%	32.1%	30.8%	15.4%
Moderat	39.9%	57.7%	52.5%	33.3%	50.0%	47.2%	47.4%	38.9%	33.3%	17.9%	33.3%	38.5%
Stort	19.5%	11.5%	18.6%	40.0%	11.1%	18.9%	21.1%	19.1%	8.3%	10.7%	28.2%	38.5%
<u>Patienttilfredshed</u>												
Tilfreds eller meget tilfreds	56.5%	49.0%	64.4%	55.5%	57.1%	54.8%	60.5%	58.3%	46.2%	36.2%	59.0%	65.0%

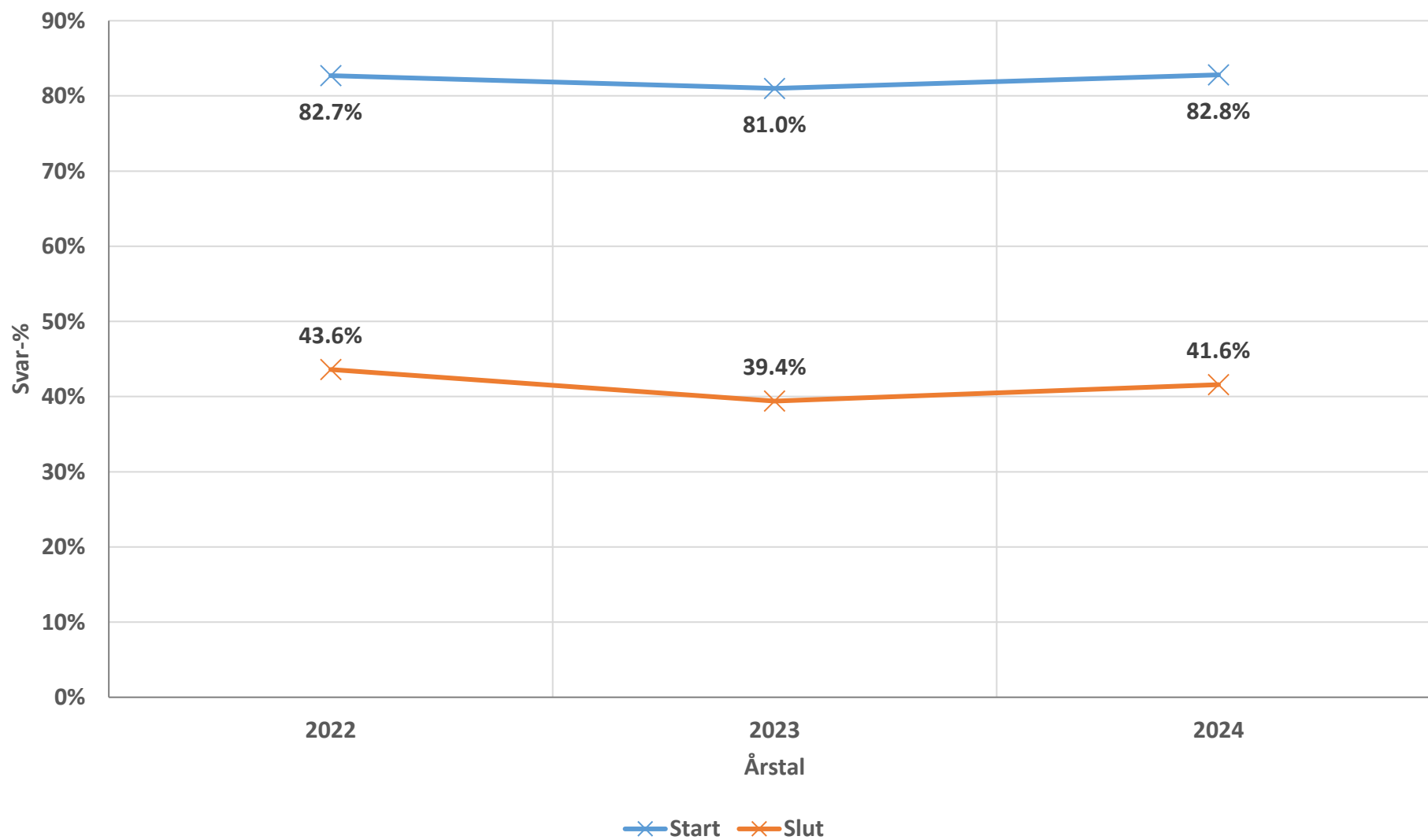
Table 5: Forbedring i smertekarakteristika for patienter der er afsluttet i 2024 og har besvaret PRO afslutningsskema.

	Samlet	207	208	210	235	256	257	277	278	280	281	411
	gns	gns	gns	gns	gns	gns	gns	gns	gns	gns	gns	gns
Δ Smerteintensitet gns seneste 7 dage	0.86	0.83	0.58	0.95	0.71	1	0.8	0.6	0.4	0.7	1.8	0.8
95% CI	0.73 - 1.0	0.34 - 1.3	0.1 - 1.0	0.1 - 1.8	0.3 - 1.1	0.6 - 1.4	0 - 1.6	0.4 - 0.8	0.75 - 1.6	0.3 - 1.2	1.4 - 2.2	0.2 - 1.8
Δ Smerteintensitet %	9.7%	9.8%	4.8%	11.2%	8.3%	12.3%	6.2%	6.5%	9.1%	8.1%	21.6%	9.1%
Δ Insomni	1.6	for få	for få	for få	for få	for få	for få	for få	for få	for få	for få	for få
95% CI	-0.2 - 3.5	for få	for få	for få	for få	for få	for få	for få	for få	for få	for få	for få
Δ Insomni %	6.3%	for få	for få	for få	for få	for få	for få	for få	for få	for få	for få	for få
Δ WHO-Trivsel	2.9	for få	for få	for få	for få	for få	for få	for få	for få	for få	for få	for få
95% CI	-2.5 - 8.4	for få	for få	for få	for få	for få	for få	for få	for få	for få	for få	for få
Δ WHO-trivsel %	21.1%	for få	for få	for få	for få	for få	for få	for få	for få	for få	for få	for få
<u>1-item Screening</u>												
Δ Katastrofering	1	1.03	0.58	1	0.5	1.43	1.52	1	0.8	0.2	1.41	1.33
95% CI	0.8 - 1.2	0.4 - 1.6	-0.3 - 1.5	-0.4 - 2.4	-0.3 - 1.3	0.7 - 2.2	0.6 - 2.4	0.7 - 1.2	-2.0 - 3.6	-0.7 - 1.1	0.8 - 2.0	-0.1 - 2.7
Δ Katastrofering %	7.5%											
Δ Bevægeangst	1.58	1.11	1.82	3.33	1.15	1.95	1.87	1.76	0	1.43	0.91	1
95% CI	1.3 - 1.8	0.1 - 2.1	1.0 - 2.6	1.22 - 5.44	0.2 - 2.1	0.95 - 3.0	0.68 - 3.1	1.4 - 2.1	-6.4 - 6.4	0.1 - 2.7	0.1 - 1.7	-0.8 - 2.8
Δ Bevægeangst %	19.5%											
Δ Stress	0.2	-0.9	-0.03	-0.27	0.48	0.2	0.38	0.45	0.2	-0.44	0.35	-0.13
95% CI	0.01 - 0.4	-1.8 - 0.1	-0.7 - 0.6	-1.5 - 1.0	-0.5 - 1.4	-0.5 - 1.0	-0.5 - 1.3	0.1 - 0.8	-2.2 - 2.6	-1.3 - 0.4	-0.2 - 0.9	-1.3 - 1.0
Δ Stress %	-4.9											
<u>Livskvalitet (PROMIS10)</u>												
Δ Fysisk helbred	0.9	1.1	1.2	1.5	0.9	1.2	1.2	0.6	0.7	0.5	1.4	1.2
95% CI	0.7 - 1.1	0.4 - 1.7	0.6 - 1.7	0.7 - 2.3	0.3 - 1.4	0.7 - 1.8	0.4 - 1.9	0.3 - 0.9	-1.0 - 2.5	-0.01 - 1.1	1.0 - 1.9	-0.2 - 2.6
Δ Fysisk helbred %	12.5%											
Δ Psykisk helbred	0.9	0.4	1.4	1.4	1.3	0.9	1.8	0.3	2.2	0.4	1.9	1.5
95% CI	0.7 - 1.1	-0.3 - 1.2	0.7 - 2.0	0.3 - 2.6	0.5 - 2.1	0.2 - 1.5	1.0 - 2.6	-0.1 - 0.6	-1.1 - 5.4	-0.3 - 1.1	1.4 - 2.5	0.2 - 1.1
Δ Psykisk helbred %	13.0%											

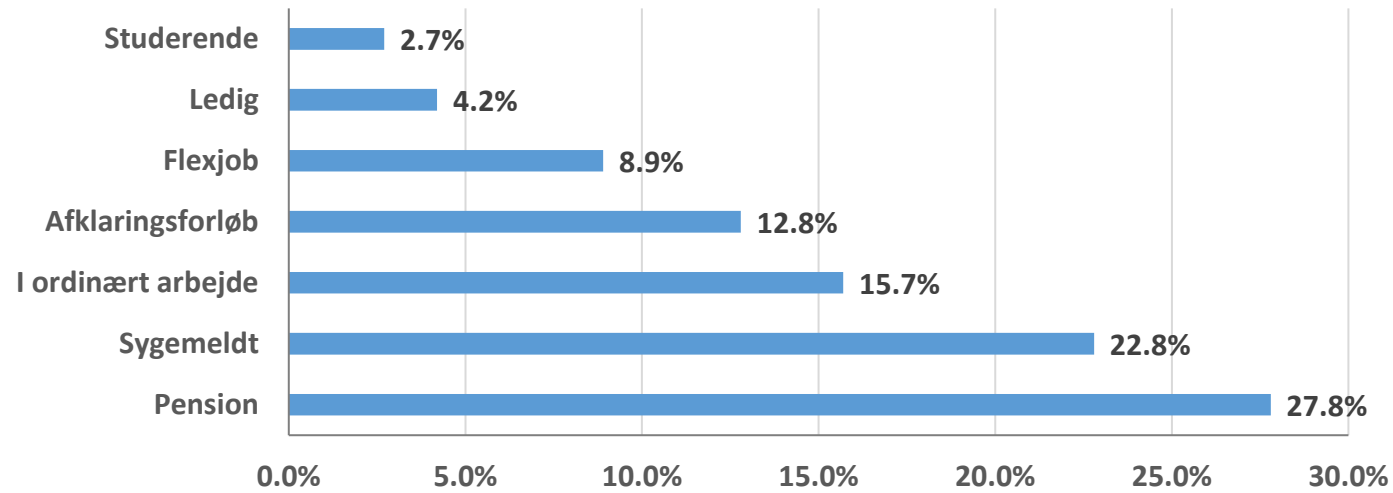
Tabel 6: Behandlingsvarighed i dage for patienter der er afsluttet efter forløb i 2024.

	Samlet	207	208	210	235	256	257	277	278	280	281	411
	gns	gns	gns	gns	gns	gns	gns	gns	gns	gns	gns	gns
Antal dage mellem dato for 1. konsultation og dato for afsluttet forløb	102	110	176	118	113	134	126	109	107	72	100	117
95% CI	99 - 105	98 - 122	165 - 188	102 - 135	100 - 126	122 - 146	110 - 141	104 - 113	82 - 131	60 - 83	91 - 108	91 - 142

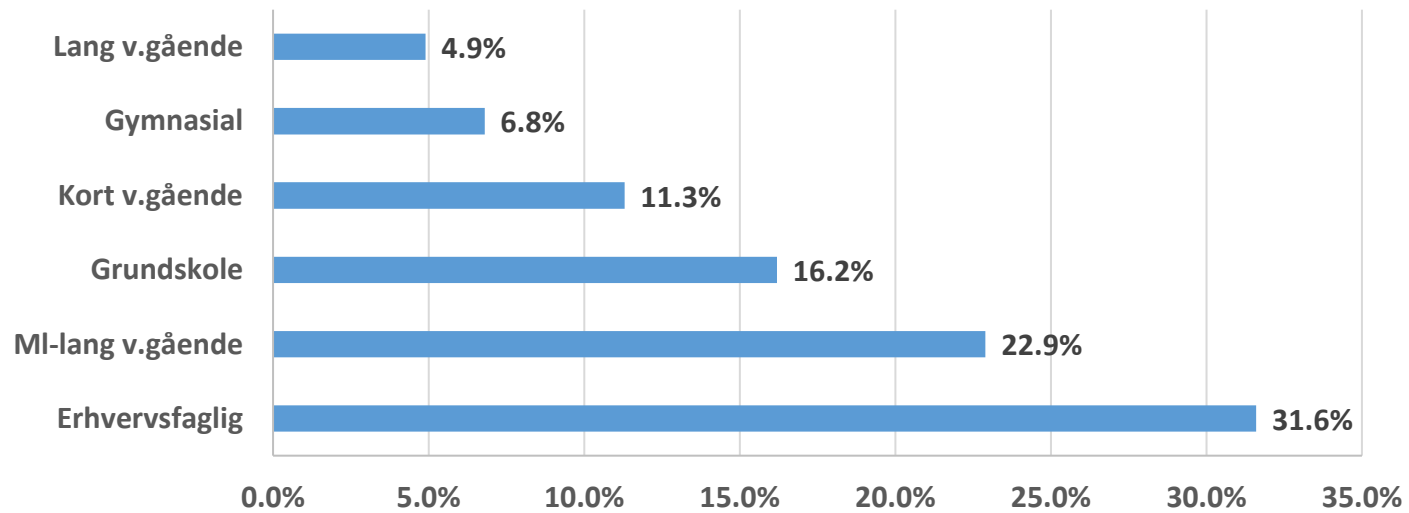
Figur 1: Samlet svar-% Patientskemaer (start og slut) de seneste 3 år



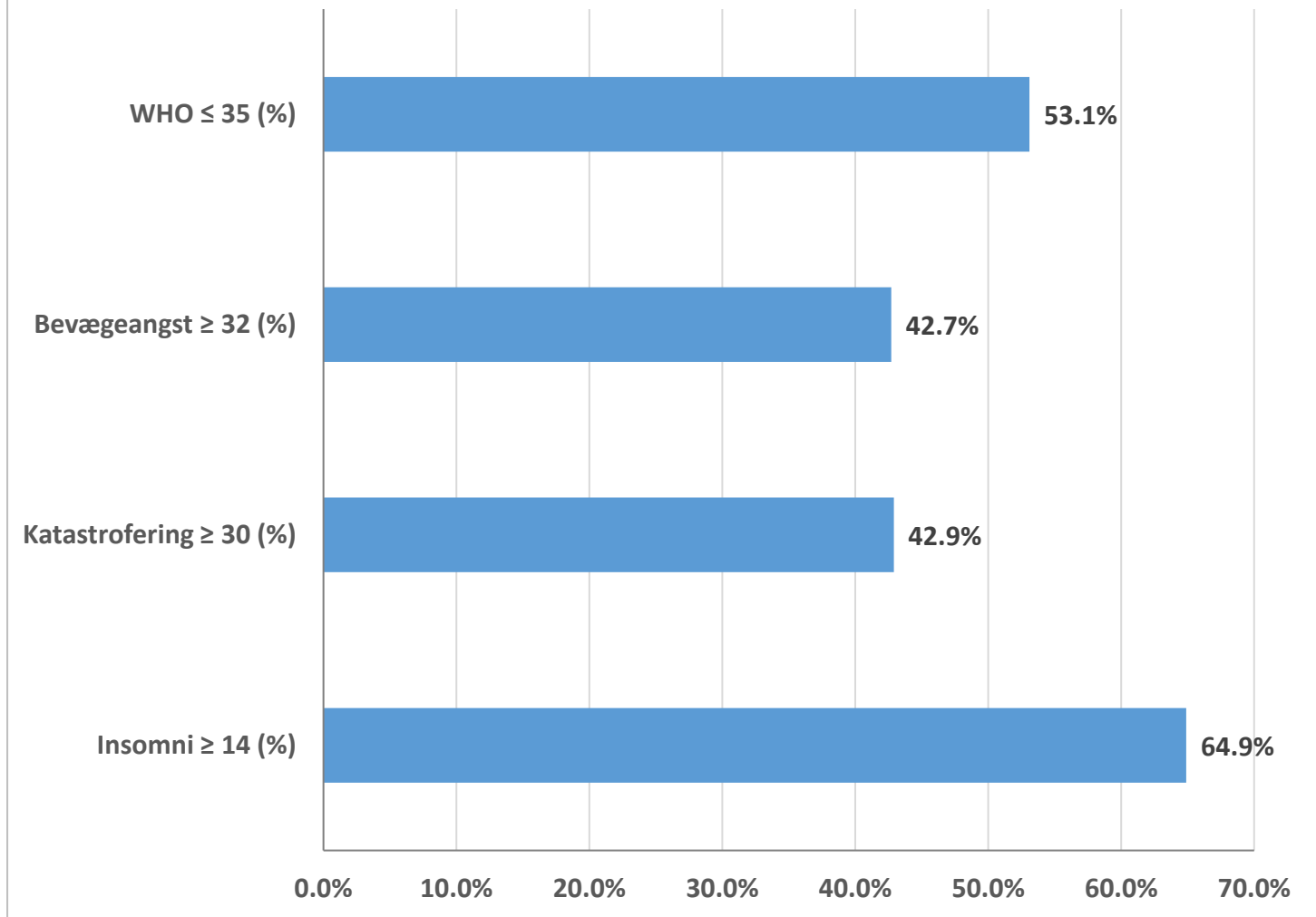
Figur 2a: Arbejdssituation



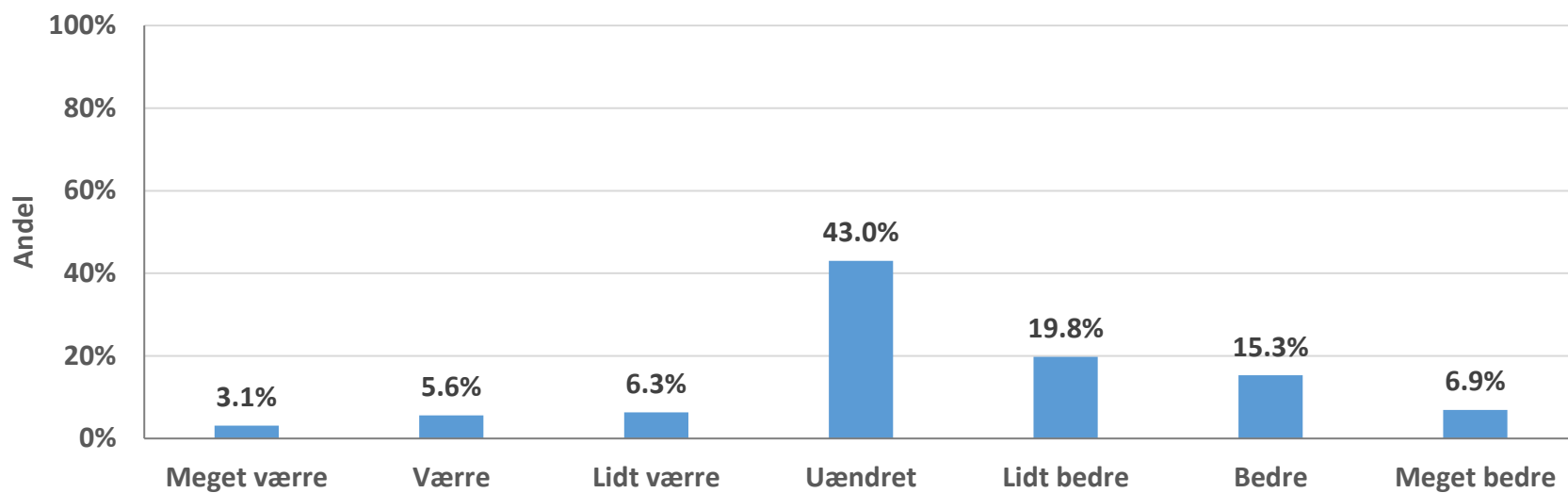
Figur 2b: Uddannelsesniveau



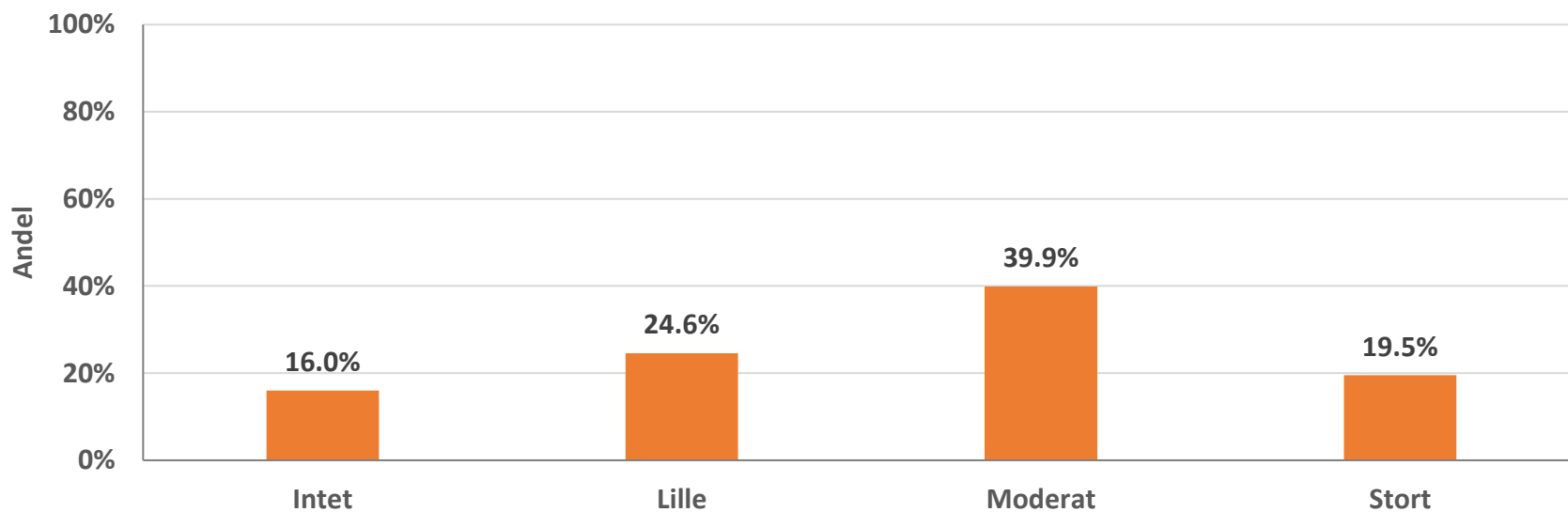
Figur 3: Udvalgte smertekarakteristika



Figur 4a: Ændring hos patienterne ved afslutning i forhold til før TSC



Figur 4b: Oplevet udbytte af forløb i TSC



Figur 5: Forbedring i smertekarakteristika efter forløb

